



# BAZ1A mouse mAb

Catalog No	BYmab-11218
Isotype	IgG
Reactivity	Human; Mouse
Applications	WB
Gene Name	BAZ1A ACF1 WCRF180 HSPC317
Protein Name	BAZ1A
Immunogen	Synthesized peptide derived from human BAZ1A AA range: 736-786
Specificity	This antibody detects endogenous levels of BAZ1A at Human/Mouse
Formulation	Liquid in PBS containing 50% glycerol, 0.5% BSA and 0.02% sodium azide.
Source	Monoclonal, Mouse,IgG
Purification	The antibody was affinity-purified from mouse antiserum by affinity-chromatography using epitope-specific immunogen.
Dilution	WB 1:500-2000
Concentration	1 mg/ml
Purity	≥90%
Storage Stability	-20°C/1 year
Synonyms	
Observed Band	
Cell Pathway	Nucleus. May target the CHRAC complex to heterochromatin.
Tissue Specificity	Highly expressed in testis and at low or undetectable levels in other tissues analyzed.
Function	function:May play a role in transcriptional regulation. May be involved in the formation or maintenance of heterochromatin playing a critical role in developmental control.,miscellaneous:Stimulated by double-stranded DNA and nucleosomal DNA.,similarity:Belongs to the WAL family.,similarity:Contains 1 bromo domain.,similarity:Contains 1 DDT domain.,similarity:Contains 1 PHD-type zinc finger.,similarity:Contains 1 WAC domain.,subcellular location:May target the CHRAC complex to heterochromatin.,subunit:Together with CHRAC1, POLE3 and SMARCA5 proteins, it forms the ISWI chromatin-remodeling complex, CHRAC.,tissue specificity:Highly expressed in testis and at low or undetectable levels in other tissues analyzed.,

Nanjing BYabscience technology Co.,Ltd

网址: [www.njbybio.com](http://www.njbybio.com)

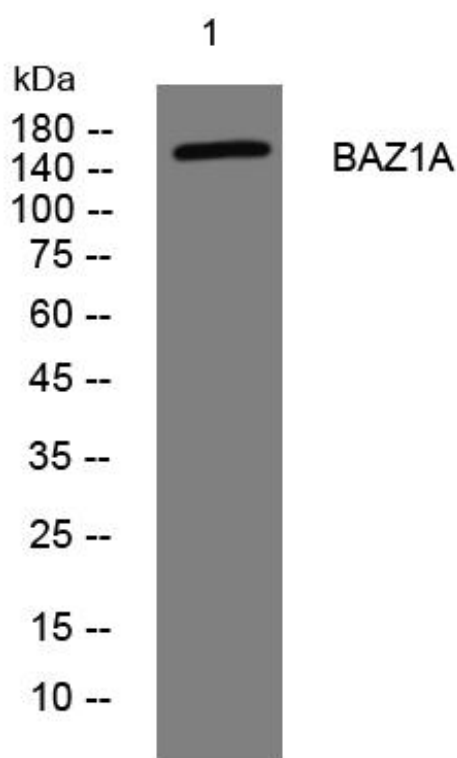
官方热线: 025-5229-8998

监督电话: 15950492658



<b>Background</b>	The BAZ1A gene encodes the accessory subunit of the ATP-dependent chromatin assembly factor (ACF), a member of the ISWI (‘imitation switch’) family of chromatin remodeling complexes (summarized by Racki et al., 2009 [PubMed 20033039]).[supplied by OMIM, Apr 2010],
<b>matters needing attention</b>	Avoid repeated freezing and thawing!
<b>Usage suggestions</b>	This product can be used in immunological reaction related experiments. For more information, please consult technical personnel.

## Products Images



Western Blot analysis of various cells using BAZ1A mouse mAb