



# LTC4S mouse mAb

<b>Catalog No</b>	BYmab-11216
<b>Isotype</b>	IgG
<b>Reactivity</b>	Human; Mouse;Rat
<b>Applications</b>	WB
<b>Gene Name</b>	LTC4S
<b>Protein Name</b>	LTC4S
<b>Immunogen</b>	Synthesized peptide derived from human LTC4S AA range: 29-79
<b>Specificity</b>	This antibody detects endogenous levels of LTC4S at Human/Mouse/Rat
<b>Formulation</b>	Liquid in PBS containing 50% glycerol, 0.5% BSA and 0.02% sodium azide.
<b>Source</b>	Monoclonal, Mouse,IgG
<b>Purification</b>	The antibody was affinity-purified from mouse antiserum by affinity-chromatography using epitope-specific immunogen.
<b>Dilution</b>	WB 1:500-2000
<b>Concentration</b>	1 mg/ml
<b>Purity</b>	≥90%
<b>Storage Stability</b>	-20°C/1 year
<b>Synonyms</b>	
<b>Observed Band</b>	
<b>Cell Pathway</b>	Nucleus outer membrane ; Multi-pass membrane protein. Endoplasmic reticulum membrane ; Multi-pass membrane protein. Nucleus membrane ; Multi-pass membrane protein.
<b>Tissue Specificity</b>	Detected in lung, platelets and the myelogenous leukemia cell line KG-1 (at protein level). LTC4S activity is present in eosinophils, basophils, mast cells, certain phagocytic mononuclear cells, endothelial cells, vascular smooth muscle cells and platelets.
<b>Function</b>	catalytic activity:Leukotriene C(4) = leukotriene A(4) + glutathione.,disease:Defects in LTC4S are the cause of leukotriene C4 synthase deficiency (LTC4 synthase deficiency) [MIM:246530]. LTC4 synthase deficiency is a fatal neurometabolic developmental disorder. It is associated with muscular hypotonia, psychomotor retardation, failure to thrive, and microcephaly.,function:Catalyzes the conjugation of leukotriene A4 with reduced glutathione to form leukotriene C4.,similarity:Belongs to the MAPEG family.,subunit:Homotrimer. Interacts with ALOX5AP and ALOX5.,tissue

**Nanjing BYabscience technology Co.,Ltd**



specificity: Detected in lung, platelets and the myelogenous leukemia cell line KG-1 (at protein level). LTC<sub>4</sub>S activity is present in eosinophils, basophils, mast cells, certain phagocytic mononuclear cells, endothelial cells, vascular smooth muscle cells and platelets.,

#### Background

The MAPEG (Membrane Associated Proteins in Eicosanoid and Glutathione metabolism) family includes a number of human proteins, several of which are involved the production of leukotrienes. This gene encodes an enzyme that catalyzes the first step in the biosynthesis of cysteinyl leukotrienes, potent biological compounds derived from arachidonic acid. Leukotrienes have been implicated as mediators of anaphylaxis and inflammatory conditions such as human bronchial asthma. This protein localizes to the nuclear envelope and adjacent endoplasmic reticulum. [provided by RefSeq, Jul 2008],

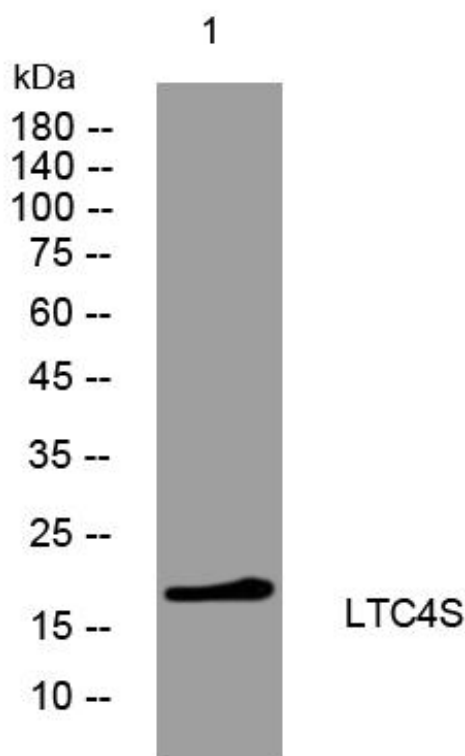
#### matters needing attention

Avoid repeated freezing and thawing!

#### Usage suggestions

This product can be used in immunological reaction related experiments. For more information, please consult technical personnel.

## Products Images



Western Blot analysis of various cells using LTC<sub>4</sub>S mouse mAb