



# PEF1 mouse mAb

<b>Catalog No</b>	BYmab-11202
<b>Isotype</b>	IgG
<b>Reactivity</b>	Human; Mouse;Rat
<b>Applications</b>	WB
<b>Gene Name</b>	PEF1 ABP32 UNQ1845/PRO3573
<b>Protein Name</b>	PEF1
<b>Immunogen</b>	Synthesized peptide derived from human PEF1 AA range: 109-159
<b>Specificity</b>	This antibody detects endogenous levels of PEF1 at Human/Mouse/Rat
<b>Formulation</b>	Liquid in PBS containing 50% glycerol, 0.5% BSA and 0.02% sodium azide.
<b>Source</b>	Monoclonal, Mouse,IgG
<b>Purification</b>	The antibody was affinity-purified from mouse antiserum by affinity-chromatography using epitope-specific immunogen.
<b>Dilution</b>	WB 1:500-2000
<b>Concentration</b>	1 mg/ml
<b>Purity</b>	≥90%
<b>Storage Stability</b>	-20°C/1 year
<b>Synonyms</b>	
<b>Observed Band</b>	
<b>Cell Pathway</b>	Cytoplasm . Endoplasmic reticulum . Membrane ; Peripheral membrane protein . Cytoplasmic vesicle, COPII-coated vesicle membrane ; Peripheral membrane protein . Membrane-associated in the presence of Ca(2+) (PubMed:11278427). Localizes to endoplasmic reticulum exit site (ERES) (By similarity). .
<b>Tissue Specificity</b>	
<b>Function</b>	similarity:Contains 5 EF-hand domains.,subcellular location:Membrane-associated in the presence of Ca(2+).,subunit:Heterodimer; heterodimerizes with PDCD6/ALG2. Dissociates from PDCD6/ALG2 in presence of Ca(2+).,
<b>Background</b>	This gene encodes a calcium-binding protein belonging to the penta-EF-hand protein family. The encoded protein has been shown to form a heterodimer with the programmed cell death 6 gene product and may modulate its function in Ca(2+) signaling. Alternative splicing results in multiple transcript variants and a pseudogene has been identified on chromosome 1.[provided by RefSeq, May

**Nanjing BYabscience technology Co.,Ltd**



2010],

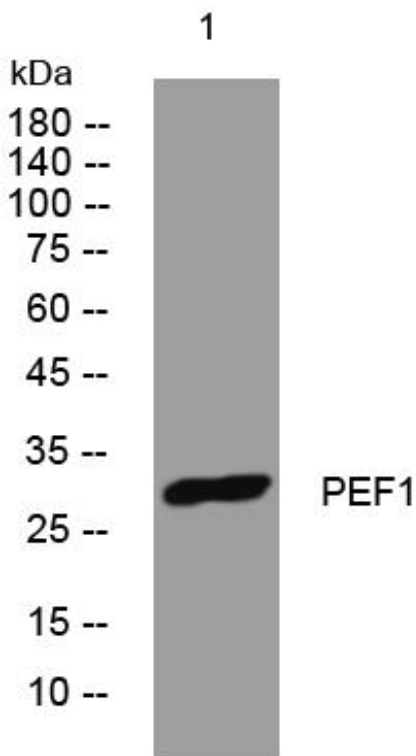
**matters needing attention**

Avoid repeated freezing and thawing!

**Usage suggestions**

This product can be used in immunological reaction related experiments. For more information, please consult technical personnel.

## Products Images



Western Blot analysis of various cells using PEF1 mouse mAb