



# TECT2 mouse mAb

|                                  |   |
|----------------------------------|---|
| <b>Catalog No</b>                | BYmab-11196   |
| <b>Isotype</b>                   | IgG   |
| <b>Reactivity</b>                | Human; Mouse;Rat  |
| <b>Applications</b>              | WB  |
| <b>Gene Name</b>                 | TCTN2 C12orf38 TECT2  |
| <b>Protein Name</b>              | TECT2   |
| <b>Immunogen</b>                 | Synthesized peptide derived from human TECT2 AA range: 427-477  |
| <b>Specificity</b>               | This antibody detects endogenous levels of TECT2 at Human/Mouse/Rat   |
| <b>Formulation</b>               | Liquid in PBS containing 50% glycerol, 0.5% BSA and 0.02% sodium azide.   |
| <b>Source</b>                    | Monoclonal, Mouse,IgG   |
| <b>Purification</b>              | The antibody was affinity-purified from mouse antiserum by affinity-chromatography using epitope-specific immunogen.  |
| <b>Dilution</b>                  | WB 1:500-2000   |
| <b>Concentration</b>             | 1 mg/ml   |
| <b>Purity</b>                    | ≥90%  |
| <b>Storage Stability</b>         | -20°C/1 year  |
| <b>Synonyms</b>                  |   |
| <b>Observed Band</b>             |   |
| <b>Cell Pathway</b>              | Membrane ; Single-pass type I membrane protein . Cytoplasm, cytoskeleton, cilium basal body . Localizes at the transition zone, a region between the basal body and the ciliary axoneme. .  |
| <b>Tissue Specificity</b>        |   |
| <b>Function</b>                  | similarity:Belongs to the tectonic family.,   |
| <b>Background</b>                | This gene encodes a type I membrane protein that belongs to the tectonic family. Studies in mice suggest that this protein may be involved in hedgehog signaling, and essential for ciliogenesis. Mutations in this gene are associated with Meckel syndrome type 8. Alternatively spliced transcript variants encoding different isoforms have been found for this gene. [provided by RefSeq, Oct 2011], |
| <b>matters needing attention</b> | Avoid repeated freezing and thawing!  |

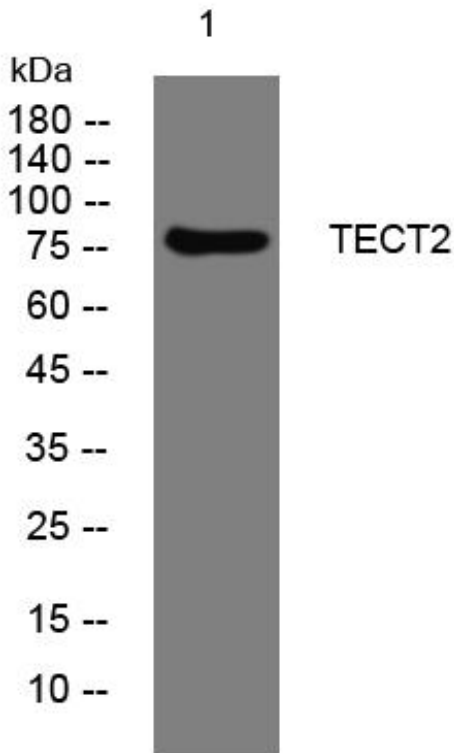
**Nanjing BYabscience technology Co.,Ltd**



### Usage suggestions

This product can be used in immunological reaction related experiments. For more information, please consult technical personnel.

## Products Images



Western Blot analysis of various cells using TECT2 mouse mAb

Nanjing BYabscience technology Co.,Ltd

网址: [www.njbybio.com](http://www.njbybio.com)

官方热线: 025-5229-8998

监督电话: 15950492658