



# GPN2 mouse mAb

Catalog No	BYmab-11195
Isotype	IgG
Reactivity	Human; Mouse;Rat
Applications	WB
Gene Name	GPN2 ATPBD1B UNQ5828/PRO19647
Protein Name	GPN2
Immunogen	Synthesized peptide derived from human GPN2 AA range: 146-196
Specificity	This antibody detects endogenous levels of GPN2 at Human/Mouse/Rat
Formulation	Liquid in PBS containing 50% glycerol, 0.5% BSA and 0.02% sodium azide.
Source	Monoclonal, Mouse,IgG
Purification	The antibody was affinity-purified from mouse antiserum by affinity-chromatography using epitope-specific immunogen.
Dilution	WB 1:500-2000
Concentration	1 mg/ml
Purity	≥90%
Storage Stability	-20°C/1 year
Synonyms	
Observed Band	
Cell Pathway	cytoplasm,
Tissue Specificity	
Function	similarity:Belongs to the GPN-loop GTPase family.,
Background	
matters needing attention	Avoid repeated freezing and thawing!
Usage suggestions	This product can be used in immunological reaction related experiments. For more information, please consult technical personnel.

Nanjing BYabscience technology Co.,Ltd

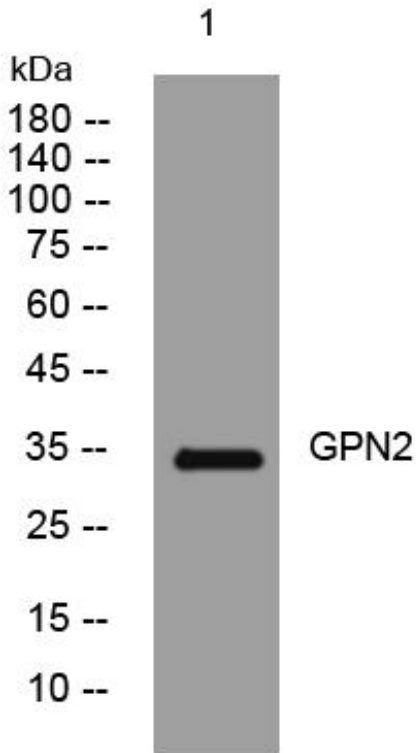
网址: [www.njbybio.com](http://www.njbybio.com)

官方热线: 025-5229-8998

监督电话: 15950492658



## Products Images



Western Blot analysis of various cells using GPN2 mouse mAb