



ZF161 mouse mAb

Catalog No	BYmab-11183
Isotype	IgG
Reactivity	Human; Mouse
Applications	WB
Gene Name	ZFP161 ZBTB14 ZNF478
Protein Name	ZF161
Immunogen	Synthesized peptide derived from human ZF161 AA range: 116-166
Specificity	This antibody detects endogenous levels of ZF161 at Human/Mouse
Formulation	Liquid in PBS containing 50% glycerol, 0.5% BSA and 0.02% sodium azide.
Source	Monoclonal, Mouse,IgG
Purification	The antibody was affinity-purified from mouse antiserum by affinity-chromatography using epitope-specific immunogen.
Dilution	WB 1:500-2000
Concentration	1 mg/ml
Purity	≥90%
Storage Stability	-20°C/1 year
Synonyms	
Observed Band	
Cell Pathway	Nucleus . Colocalizes with ZBTB21 in nucleus in HEK293 cells.
Tissue Specificity	
Function	domain:The BTB/POZ domain seems to direct the protein to discrete regions in the nucleus.,function:Transcriptional repressor of c-Myc and thymidine kinase promoters (By similarity). Transcriptional activator of the dopamine transporter (DAT), binding it's promoter at the consensus sequence 5'-CCTGCACAGTTCACGGA-3'.,similarity:Belongs to the krueppel C2H2-type zinc-finger protein family.,similarity:Contains 1 BTB (POZ) domain.,similarity:Contains 5 C2H2-type zinc fingers.,
Background	

Nanjing BYabscience technology Co.,Ltd

网址: www.njbybio.com

官方热线: 025-5229-8998

监督电话: 15950492658



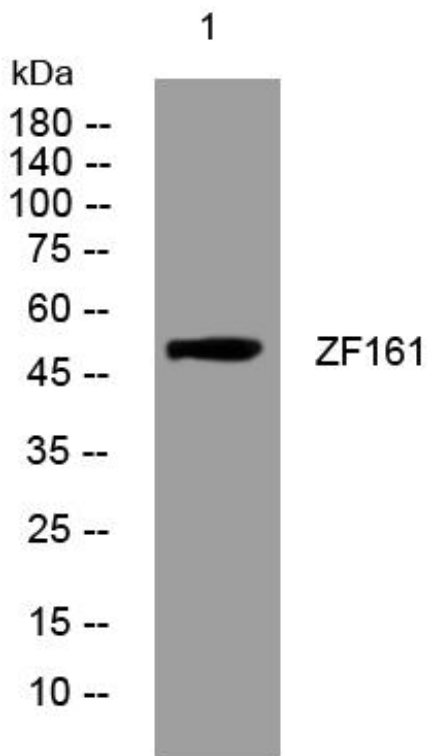
matters needing attention

Avoid repeated freezing and thawing!

Usage suggestions

This product can be used in immunological reaction related experiments. For more information, please consult technical personnel.

Products Images



Western Blot analysis of various cells using ZF161 mouse mAb