



KIF24 mouse mAb

| | |
|----------------------------------|---|
| Catalog No | BYmab-11181 |
| Isotype | IgG |
| Reactivity | Human; Mouse |
| Applications | WB |
| Gene Name | KIF24 C9orf48 |
| Protein Name | KIF24 |
| Immunogen | Synthesized peptide derived from human KIF24 AA range: 1-51 |
| Specificity | This antibody detects endogenous levels of KIF24 at Human/Mouse |
| Formulation | Liquid in PBS containing 50% glycerol, 0.5% BSA and 0.02% sodium azide. |
| Source | Monoclonal, Mouse,IgG |
| Purification | The antibody was affinity-purified from mouse antiserum by affinity-chromatography using epitope-specific immunogen. |
| Dilution | WB 1:500-2000 |
| Concentration | 1 mg/ml |
| Purity | ≥90% |
| Storage Stability | -20°C/1 year |
| Synonyms | |
| Observed Band | |
| Cell Pathway | Cytoplasm, cytoskeleton, microtubule organizing center, centrosome, centriole . Cytoplasm, cytoskeleton, microtubule organizing center, centrosome . Primarily localizes to the mother centriole/basal body and is either absent at daughter centriole. |
| Tissue Specificity | |
| Function | similarity:Belongs to the kinesin-like protein family.,similarity:Contains 1 kinesin-motor domain.,similarity:Contains 1 SAM (sterile alpha motif) domain., |
| Background | Kinesins, such as KIF24, are microtubule-dependent ATPases that function as molecular motors. They play important roles in intracellular vesicle transport and cell division (summary by Venturelli et al., 2010 [PubMed 20670673]).[supplied by OMIM, Feb 2011], |
| matters needing attention | Avoid repeated freezing and thawing! |

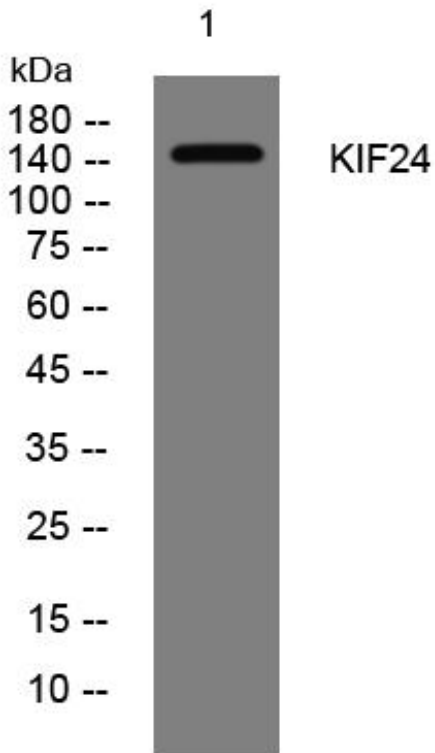
Nanjing BYabscience technology Co.,Ltd



Usage suggestions

This product can be used in immunological reaction related experiments. For more information, please consult technical personnel.

Products Images



Western Blot analysis of various cells using KIF24 mouse mAb

Nanjing BYabscience technology Co.,Ltd

网址: www.njbybio.com

官方热线: 025-5229-8998

监督电话: 15950492658