



GLDN mouse mAb

Catalog No	BYmab-11180
Isotype	IgG
Reactivity	Human; Mouse;Rat
Applications	WB
Gene Name	GLDN COLM UNQ9339/PRO34011
Protein Name	GLDN
Immunogen	Synthesized peptide derived from human GLDN AA range: 461-511
Specificity	This antibody detects endogenous levels of GLDN at Human/Mouse/Rat
Formulation	Liquid in PBS containing 50% glycerol, 0.5% BSA and 0.02% sodium azide.
Source	Monoclonal, Mouse,IgG
Purification	The antibody was affinity-purified from mouse antiserum by affinity-chromatography using epitope-specific immunogen.
Dilution	WB 1:500-2000
Concentration	1 mg/ml
Purity	≥90%
Storage Stability	-20°C/1 year
Synonyms	
Observed Band	
Cell Pathway	Cell membrane ; Single-pass type II membrane protein . Cell projection, axon . Detected at the nodes of Ranvier. Detected at immature heminodes. .; [Gliomedin shedded ectodomain]: Secreted . Secreted, extracellular space, extracellular matrix . Proteolytic processing gives rise to a soluble extracellular domain that is secreted. The gliomedin shedded ectodomain localizes to the nodes of Ranvier. .
Tissue Specificity	Specifically expressed in spinal cord, brain, placenta and sciatic nerve. More abundant in peripheral than central nervous system.
Function	domain:The olfactomedin-like domain mediates NFASC/neurofascin and NRCAM binding.,function:Plays a role in the formation of the nodes of Ranvier along myelinated axons. Probable NRCAM and NFASC/neurofascin ligand which may provide a glial positional clue required for the proper molecular assembly of the nodes of Ranvier.,similarity:Contains 1 olfactomedin-like domain.,similarity:Contains 2 collagen-like domains.,subcellular location:Localizes to the nodes of Ranvier.,subunit:Interacts with NFASC/neurofascin and NRCAM.,tissue specificity:Specifically expressed in

Nanjing BYabscience technology Co.,Ltd



spinal cord, brain, placenta and sciatic nerve. More abundant in peripheral than central nervous system.,

Background

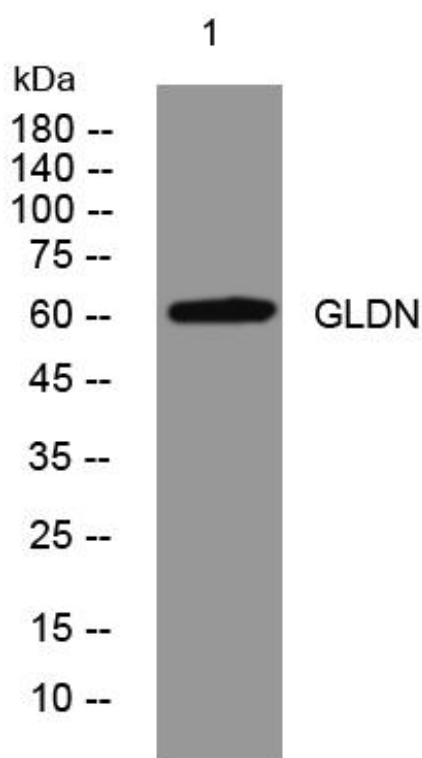
matters needing attention

Avoid repeated freezing and thawing!

Usage suggestions

This product can be used in immunological reaction related experiments. For more information, please consult technical personnel.

Products Images



Western Blot analysis of various cells using GLDN mouse mAb

Nanjing BYabscience technology Co.,Ltd

网址: www.njbybio.com

官方热线: 025-5229-8998

监督电话: 15950492658