



HEAT6 mouse mAb

Catalog No	BYmab-11154
Isotype	IgG
Reactivity	Human; Mouse;Rat
Applications	WB
Gene Name	HEATR6 ABC1
Protein Name	HEAT6
Immunogen	Synthesized peptide derived from human HEAT6 AA range: 579-629
Specificity	This antibody detects endogenous levels of HEAT6 at Human/Mouse/Rat
Formulation	Liquid in PBS containing 50% glycerol, 0.5% BSA and 0.02% sodium azide.
Source	Monoclonal, Mouse,IgG
Purification	The antibody was affinity-purified from mouse antiserum by affinity-chromatography using epitope-specific immunogen.
Dilution	WB 1:500-2000
Concentration	1 mg/ml
Purity	≥90%
Storage Stability	-20°C/1 year
Synonyms	
Observed Band	
Cell Pathway	
Tissue Specificity	Amplified in breast cancer cell lines MCF-7 and BT-474.
Function	function:Amplification-dependent oncogene.,miscellaneous:17q23 region is one of the most commonly amplified regions in breast cancer and therefore may harbor genes important for breast cancer development and progression.,similarity:Contains 4 HEAT repeats.,tissue specificity:Amplified in breast cancer cell lines MCF7 and BT474.,
Background	
matters needing attention	Avoid repeated freezing and thawing!

Nanjing BYabscience technology Co.,Ltd

网址: www.njbybio.com

官方热线: 025-5229-8998

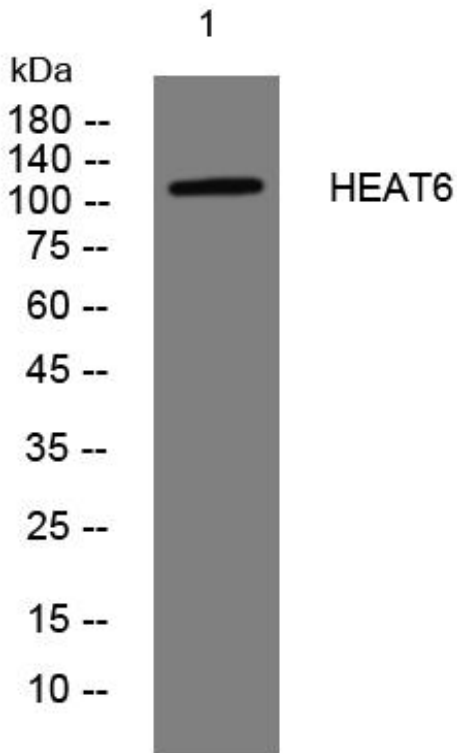
监督电话: 15950492658



Usage suggestions

This product can be used in immunological reaction related experiments. For more information, please consult technical personnel.

Products Images



Western Blot analysis of various cells using HEAT6 mouse mAb

Nanjing BYabscience technology Co.,Ltd

网址: www.njbybio.com

官方热线: 025-5229-8998

监督电话: 15950492658