



NUDT6 mouse mAb

Catalog No	BYmab-11150
Isotype	IgG
Reactivity	Human; Mouse; Rat
Applications	WB
Gene Name	NUDT6 FGF2AS
Protein Name	NUDT6
Immunogen	Synthesized peptide derived from human NUDT6 AA range: 225-275
Specificity	This antibody detects endogenous levels of NUDT6 at Human/Mouse/Rat
Formulation	Liquid in PBS containing 50% glycerol, 0.5% BSA and 0.02% sodium azide.
Source	Monoclonal, Mouse, IgG
Purification	The antibody was affinity-purified from mouse antiserum by affinity-chromatography using epitope-specific immunogen.
Dilution	WB 1:500-2000
Concentration	1 mg/ml
Purity	≥90%
Storage Stability	-20°C/1 year
Synonyms	
Observed Band	
Cell Pathway	Cytoplasm. Nucleus. Mitochondrion. Subcellular location may vary between isoforms.
Tissue Specificity	Detected in liver, kidney and esophagus (at protein level). Ubiquitous.
Function	miscellaneous: This protein is coded from a FGF2 (BFGF) gene antisense transcript., similarity: Belongs to the Nudix hydrolase family.,
Background	This gene overlaps and lies on the opposite strand from FGF2 gene, and is thought to be the FGF2 antisense gene. The two genes are independently transcribed, and their expression shows an inverse relationship, suggesting that this antisense transcript may regulate FGF2 expression. This gene has also been shown to have hormone-regulatory and antiproliferative actions in the pituitary that are independent of FGF2 expression. Alternatively spliced transcript variants encoding different isoforms have been found for this gene. [provided by RefSeq, Oct 2011],

Nanjing BYabscience technology Co., Ltd



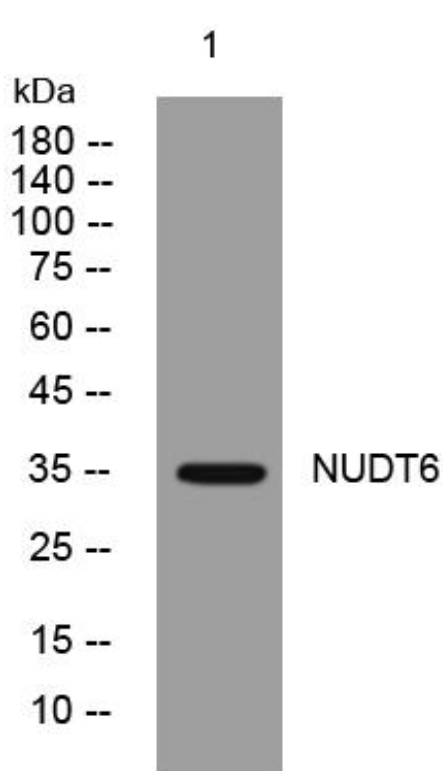
matters needing attention

Avoid repeated freezing and thawing!

Usage suggestions

This product can be used in immunological reaction related experiments. For more information, please consult technical personnel.

Products Images



Western Blot analysis of various cells using NUDT6 mouse mAb