



# PA2GE mouse mAb

Catalog No	BYmab-11134
Isotype	IgG
Reactivity	Human; Mouse
Applications	WB
Gene Name	PLA2G2E
Protein Name	PA2GE
Immunogen	Synthesized peptide derived from human PA2GE AA range: 58-108
Specificity	This antibody detects endogenous levels of PA2GE at Human/Mouse
Formulation	Liquid in PBS containing 50% glycerol, 0.5% BSA and 0.02% sodium azide.
Source	Monoclonal, Mouse,IgG
Purification	The antibody was affinity-purified from mouse antiserum by affinity-chromatography using epitope-specific immunogen.
Dilution	WB 1:500-2000
Concentration	1 mg/ml
Purity	≥90%
Storage Stability	-20°C/1 year
Synonyms	
Observed Band	
Cell Pathway	Secreted . Cytoplasm . Through binding to heparan sulfate proteoglycan, may be localized to cytoplasmic compartments enriched in anionic phospholipids. .
Tissue Specificity	Restricted to the brain, heart, lung, and placenta.
Function	catalytic activity:Phosphatidylcholine + H(2)O = 1-acylglycerophosphocholine + a carboxylate.,cofactor:Binds 1 calcium ion per subunit.,function:PA2 catalyzes the calcium-dependent hydrolysis of the 2-acyl groups in 3-sn-phosphoglycerides. Has a preference for arachidonic-containing phospholipids.,similarity:Belongs to the phospholipase A2 family.,tissue specificity:Restricted to the brain, heart, lung, and placenta.,
Background	
matters needing attention	Avoid repeated freezing and thawing!

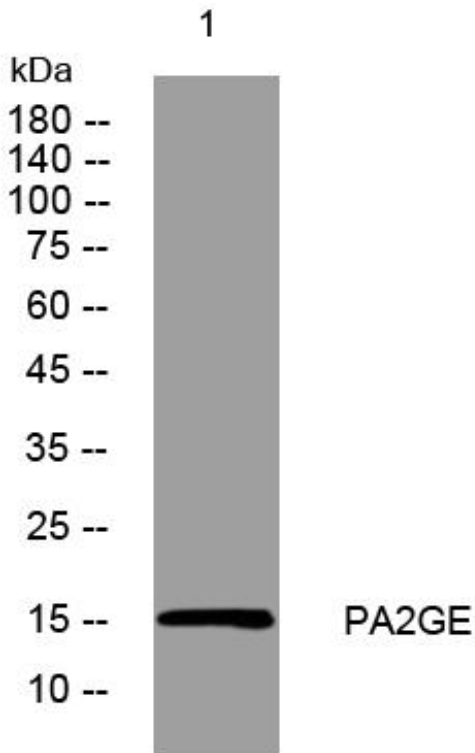
Nanjing BYabscience technology Co.,Ltd



### Usage suggestions

This product can be used in immunological reaction related experiments. For more information, please consult technical personnel.

## Products Images



Western Blot analysis of various cells using PA2GE mouse mAb

Nanjing BYabscience technology Co.,Ltd

网址: [www.njbybio.com](http://www.njbybio.com)

官方热线: 025-5229-8998

监督电话: 15950492658