



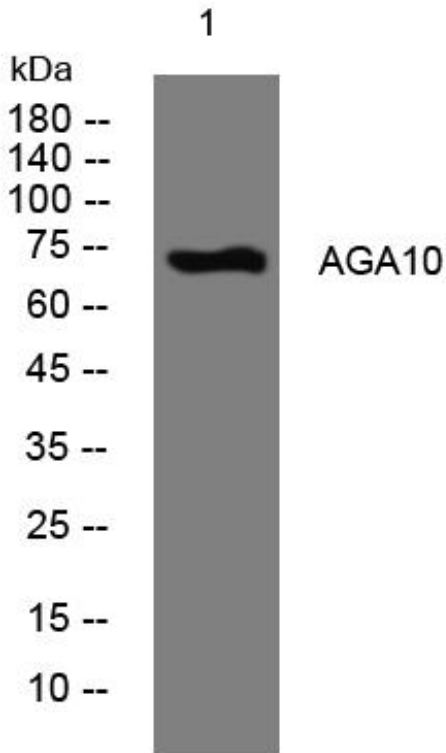
AGA10 mouse mAb

Catalog No	BYmab-11132
Isotype	IgG
Reactivity	Human;Rat;Mouse;
Applications	WB
Gene Name	AGAP10 CTGLF7
Protein Name	AGA10
Immunogen	Synthesized peptide derived from human AGA10 AA range: 175-225
Specificity	This antibody detects endogenous levels of AGA10 at Human
Formulation	Liquid in PBS containing 50% glycerol, 0.5% BSA and 0.02% sodium azide.
Source	Monoclonal, Mouse,IgG
Purification	The antibody was affinity-purified from mouse antiserum by affinity-chromatography using epitope-specific immunogen.
Dilution	WB 1:500-2000
Concentration	1 mg/ml
Purity	≥90%
Storage Stability	-20°C/1 year
Synonyms	
Observed Band	
Cell Pathway	
Tissue Specificity	
Function	
Background	
matters needing attention	Avoid repeated freezing and thawing!
Usage suggestions	This product can be used in immunological reaction related experiments. For more information, please consult technical personnel.

Nanjing BYabscience technology Co.,Ltd



Products Images



Western Blot analysis of various cells using AGA10 mouse mAb