



DEN2D mouse mAb

Catalog No	BYmab-11127
Isotype	IgG
Reactivity	Human; Mouse
Applications	WB
Gene Name	DENND2D
Protein Name	DEN2D
Immunogen	Synthesized peptide derived from human DEN2D AA range: 183-233
Specificity	This antibody detects endogenous levels of DEN2D at Human/Mouse
Formulation	Liquid in PBS containing 50% glycerol, 0.5% BSA and 0.02% sodium azide.
Source	Monoclonal, Mouse,IgG
Purification	The antibody was affinity-purified from mouse antiserum by affinity-chromatography using epitope-specific immunogen.
Dilution	WB 1:500-2000
Concentration	1 mg/ml
Purity	≥90%
Storage Stability	-20°C/1 year
Synonyms	
Observed Band	
Cell Pathway	Cytoplasm .
Tissue Specificity	In bronchial mucosa, mainly expressed in ciliated and basal epithelial cells and weakly in alveolar cells (at protein level). Tends to be down-regulated in lung cancers, immortalized bronchial epithelial cell lines and precancerous lesions.
Function	similarity:Contains 1 dDENN domain.,similarity:Contains 1 DENN domain.,similarity:Contains 1 uDENN domain.,
Background	
matters needing attention	Avoid repeated freezing and thawing!

Nanjing BYabscience technology Co.,Ltd

网址: www.njbybio.com

官方热线: 025-5229-8998

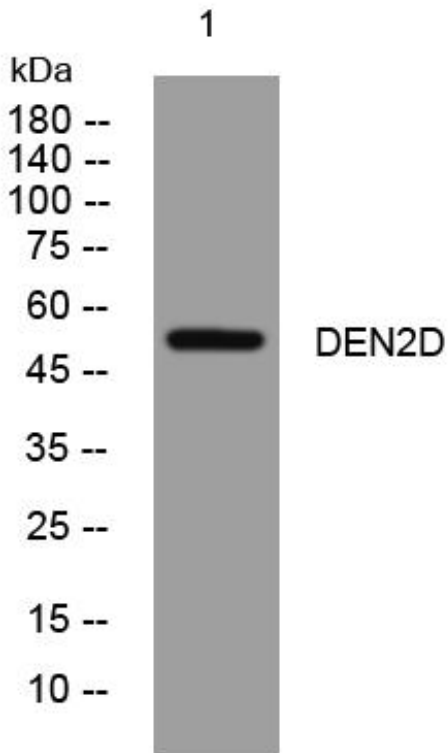
监督电话: 15950492658



Usage suggestions

This product can be used in immunological reaction related experiments. For more information, please consult technical personnel.

Products Images



Western Blot analysis of various cells using DEN2D mouse mAb

Nanjing BYabs science technology Co.,Ltd

网址: www.njbybio.com

官方热线: 025-5229-8998

监督电话: 15950492658