



# CHMP7 mouse mAb

<b>Catalog No</b>	BYmab-11122
<b>Isotype</b>	IgG
<b>Reactivity</b>	Human; Mouse
<b>Applications</b>	WB
<b>Gene Name</b>	CHMP7
<b>Protein Name</b>	CHMP7
<b>Immunogen</b>	Synthesized peptide derived from human CHMP7 AA range: 145-195
<b>Specificity</b>	This antibody detects endogenous levels of CHMP7 at Human/Mouse
<b>Formulation</b>	Liquid in PBS containing 50% glycerol, 0.5% BSA and 0.02% sodium azide.
<b>Source</b>	Monoclonal, Mouse,IgG
<b>Purification</b>	The antibody was affinity-purified from mouse antiserum by affinity-chromatography using epitope-specific immunogen.
<b>Dilution</b>	WB 1:500-2000
<b>Concentration</b>	1 mg/ml
<b>Purity</b>	≥90%
<b>Storage Stability</b>	-20°C/1 year
<b>Synonyms</b>	
<b>Observed Band</b>	
<b>Cell Pathway</b>	Cytoplasm . Nucleus envelope . Nucleus envelope . Diffused localization, with some punctate distribution, especially in the perinuclear area (PubMed:16856878). Localizes to the reforming nuclear envelope on chromatin disks during late anaphase (PubMed:26040712, PubMed:28242692). .
<b>Tissue Specificity</b>	
<b>Function</b>	function:Plays a role in the endosomal sorting pathway.,similarity:Belongs to the SNF7 family.,subcellular location:Diffused localization, with some punctate distribution, especially in the perinuclear area.,subunit:Interacts with CHMP4B, but not with VPS25.,
<b>Background</b>	
<b>matters needing attention</b>	Avoid repeated freezing and thawing!

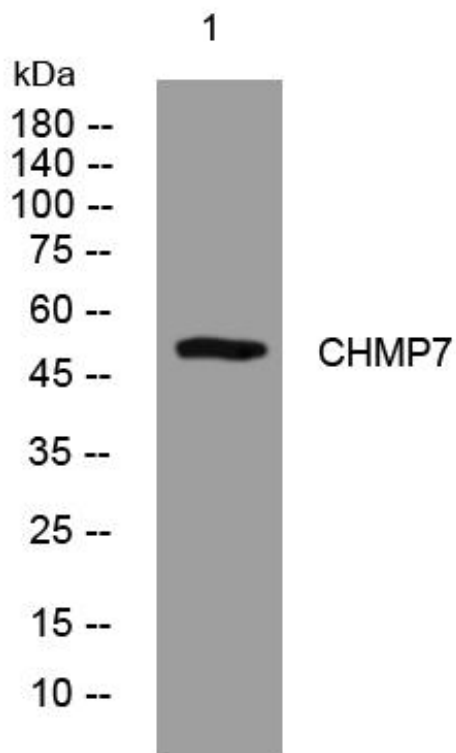
**Nanjing BYabscience technology Co.,Ltd**



### Usage suggestions

This product can be used in immunological reaction related experiments. For more information, please consult technical personnel.

## Products Images



Western Blot analysis of various cells using CHMP7 mouse mAb

Nanjing BYabscience technology Co.,Ltd

网址: [www.njbybio.com](http://www.njbybio.com)

官方热线: 025-5229-8998

监督电话: 15950492658