



# ESPB1 mouse mAb

Catalog No	BYmab-11121
Isotype	IgG
Reactivity	Human;Rat;Mouse;
Applications	WB
Gene Name	ELSPBP1 E12
Protein Name	ESPB1
Immunogen	Synthesized peptide derived from human ESPB1 AA range: 67-117
Specificity	This antibody detects endogenous levels of ESPB1 at Human
Formulation	Liquid in PBS containing 50% glycerol, 0.5% BSA and 0.02% sodium azide.
Source	Monoclonal, Mouse,IgG
Purification	The antibody was affinity-purified from mouse antiserum by affinity-chromatography using epitope-specific immunogen.
Dilution	WB 1:500-2000
Concentration	1 mg/ml
Purity	≥90%
Storage Stability	-20°C/1 year
Synonyms	
Observed Band	
Cell Pathway	Secreted .
Tissue Specificity	Detected in cauda epididymidal fluid and on sperm membrane (at protein level).
Function	function: Binds to spermatozoa upon ejaculation and may play a role in sperm capacitation. Has phosphorylcholine-binding activity.,PTM:N-glycosylated.,similarity:Belongs to the seminal plasma protein family.,similarity:Contains 4 fibronectin type-II domains.,tissue specificity:Detected in cauda epididymidal fluid and on sperm membrane (at protein level).
Background	The protein encoded by this gene belongs to the sperm-coating protein family of epididymal origin. This protein and its canine homolog are the first known examples of proteins with four tandemly arranged fibronectin type 2 (Fn2) domains in the Fn2-module protein family. [provided by RefSeq, Jul 2008],

Nanjing BYabscience technology Co.,Ltd



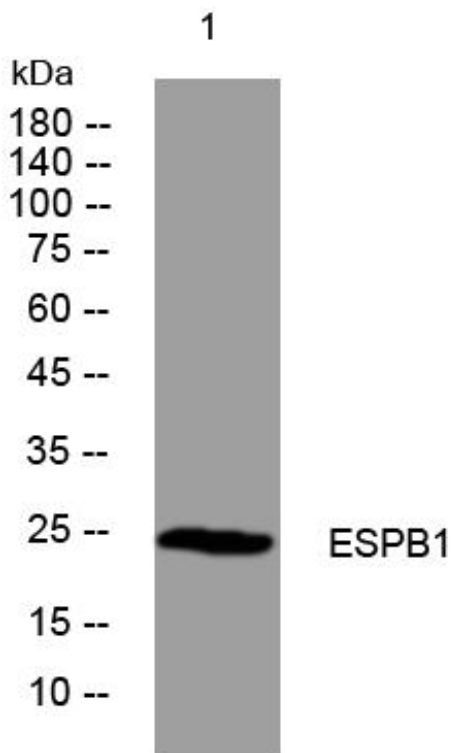
**matters needing attention**

Avoid repeated freezing and thawing!

**Usage suggestions**

This product can be used in immunological reaction related experiments. For more information, please consult technical personnel.

## Products Images



Western Blot analysis of various cells using ESPB1 mouse mAb

Nanjing BYabs science technology Co.,Ltd

网址: [www.njbybio.com](http://www.njbybio.com)

官方热线: 025-5229-8998

监督电话: 15950492658