



# CWC15 mouse mAb

Catalog No	BYmab-11120
Isotype	IgG
Reactivity	Human; Mouse;Rat
Applications	WB
Gene Name	CWC15 C11orf5 AD-002 HSPC148
Protein Name	CWC15
Immunogen	Synthesized peptide derived from human CWC15 AA range: 33-83
Specificity	This antibody detects endogenous levels of CWC15 at Human/Mouse/Rat
Formulation	Liquid in PBS containing 50% glycerol, 0.5% BSA and 0.02% sodium azide.
Source	Monoclonal, Mouse,IgG
Purification	The antibody was affinity-purified from mouse antiserum by affinity-chromatography using epitope-specific immunogen.
Dilution	WB 1:500-2000
Concentration	1 mg/ml
Purity	≥90%
Storage Stability	-20°C/1 year
Synonyms	
Observed Band	
Cell Pathway	Nucleus .
Tissue Specificity	
Function	caution:Has been termed C11orf5 (PubMed:10873569), but is not the official C11orf5 as defined by HGNC.,function:Involved in pre-mRNA splicing.,similarity:Belongs to the CWC15 family.,
Background	
matters needing attention	Avoid repeated freezing and thawing!

Nanjing BYabscience technology Co.,Ltd

网址: [www.njbybio.com](http://www.njbybio.com)

官方热线: 025-5229-8998

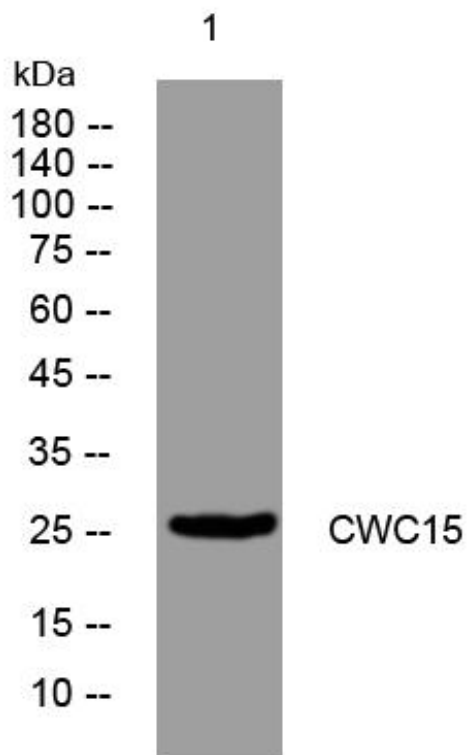
监督电话: 15950492658



### Usage suggestions

This product can be used in immunological reaction related experiments. For more information, please consult technical personnel.

## Products Images



Western Blot analysis of various cells using CWC15 mouse mAb

Nanjing BYabscience technology Co.,Ltd

网址: [www.njbybio.com](http://www.njbybio.com)

官方热线: 025-5229-8998

监督电话: 15950492658