



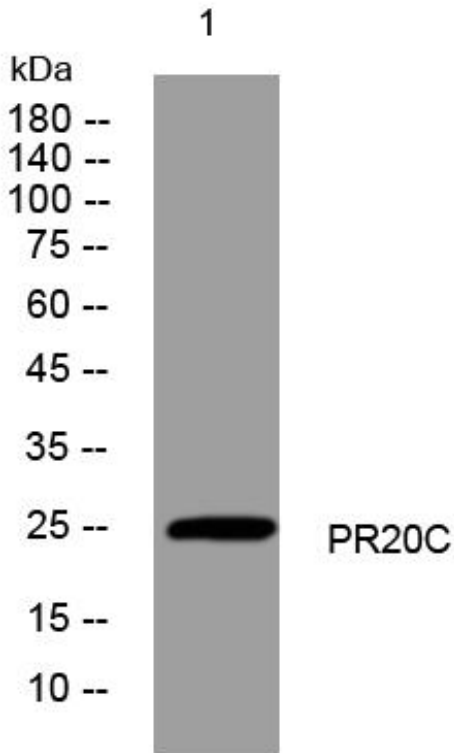
PR20C mouse mAb

Catalog No	BYmab-11103
Isotype	IgG
Reactivity	Human;Rat;Mouse;
Applications	WB
Gene Name	PRR20C
Protein Name	PR20C
Immunogen	Synthesized peptide derived from human PR20C AA range: 54-104
Specificity	This antibody detects endogenous levels of PR20C at Human
Formulation	Liquid in PBS containing 50% glycerol, 0.5% BSA and 0.02% sodium azide.
Source	Monoclonal, Mouse,IgG
Purification	The antibody was affinity-purified from mouse antiserum by affinity-chromatography using epitope-specific immunogen.
Dilution	WB 1:500-2000
Concentration	1 mg/ml
Purity	≥90%
Storage Stability	-20°C/1 year
Synonyms	
Observed Band	
Cell Pathway	
Tissue Specificity	
Function	
Background	This gene is one of five identical loci in a cluster on chromosome 13q21.1. The predicted protein is proline-rich and contains several dopamine D4 receptor signatures and PRINTS domains. [provided by RefSeq, Oct 2008],
matters needing attention	Avoid repeated freezing and thawing!
Usage suggestions	This product can be used in immunological reaction related experiments. For more information, please consult technical personnel.

Nanjing BYabscience technology Co.,Ltd



Products Images



Western Blot analysis of various cells using PR20C mouse mAb