



# PDLI3 mouse mAb

<b>Catalog No</b>	BYmab-11102
<b>Isotype</b>	IgG
<b>Reactivity</b>	Human; Mouse;Rat
<b>Applications</b>	WB
<b>Gene Name</b>	PDLIM3 ALP
<b>Protein Name</b>	PDLI3
<b>Immunogen</b>	Synthesized peptide derived from human PDLI3 AA range: 251-301
<b>Specificity</b>	This antibody detects endogenous levels of PDLI3 at Human/Mouse/Rat
<b>Formulation</b>	Liquid in PBS containing 50% glycerol, 0.5% BSA and 0.02% sodium azide.
<b>Source</b>	Monoclonal, Mouse,IgG
<b>Purification</b>	The antibody was affinity-purified from mouse antiserum by affinity-chromatography using epitope-specific immunogen.
<b>Dilution</b>	WB 1:500-2000
<b>Concentration</b>	1 mg/ml
<b>Purity</b>	≥90%
<b>Storage Stability</b>	-20°C/1 year
<b>Synonyms</b>	
<b>Observed Band</b>	
<b>Cell Pathway</b>	Cytoplasm, myofibril, sarcomere, Z line . Localizes to myofiber Z-lines.
<b>Tissue Specificity</b>	Isoform 1 is highly expressed in differentiated skeletal muscle. Isoform 2 is heart-specific.
<b>Function</b>	disease:Quantitative or qualitative alterations of expression have not been detected in facioscapulohumeral muscular dystrophy (FSD).,function:May play a role in the organization of actin filament arrays within muscle cells.,similarity:Contains 1 LIM zinc-binding domain.,similarity:Contains 1 PDZ (DHR) domain.,subcellular location:Localizes to myofiber Z-lines.,subunit:Interacts with ACTN2.,tissue specificity:Isoform 1 is highly expressed in differentiated skeletal muscle. Isoform 2 is heart-specific.,
<b>Background</b>	The protein encoded by this gene contains a PDZ domain and a LIM domain, indicating that it may be involved in cytoskeletal assembly. In support of this, the encoded protein has been shown to bind the spectrin-like repeats of alpha-actinin-2 and to colocalize with alpha-actinin-2 at the Z lines of skeletal

**Nanjing BYabscience technology Co.,Ltd**



muscle. Alternatively spliced transcript variants encoding multiple isoforms have been observed for this gene. Aberrant alternative splicing of this gene may play a role in myotonic dystrophy. [provided by RefSeq, Apr 2012],

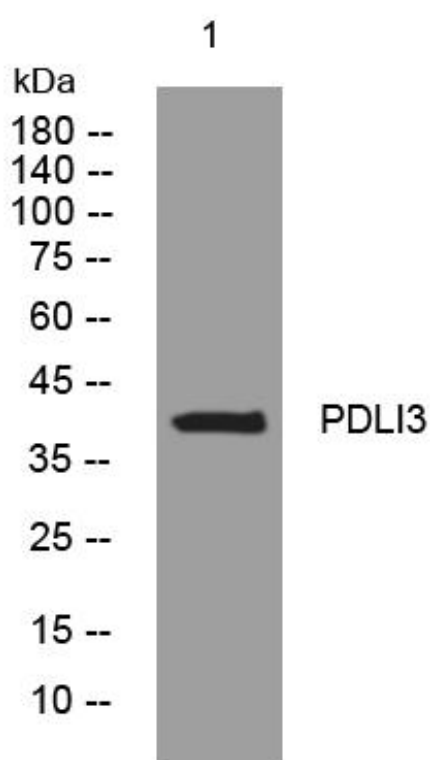
**matters needing attention**

Avoid repeated freezing and thawing!

**Usage suggestions**

This product can be used in immunological reaction related experiments. For more information, please consult technical personnel.

## Products Images



Western Blot analysis of various cells using PDLI3 mouse mAb