



IGS21 mouse mAb

Catalog No	BYmab-11100
Isotype	IgG
Reactivity	Human; Mouse
Applications	WB
Gene Name	IGSF21
Protein Name	IGS21
Immunogen	Synthesized peptide derived from human IGS21 AA range: 289-339
Specificity	This antibody detects endogenous levels of IGS21 at Human/Mouse
Formulation	Liquid in PBS containing 50% glycerol, 0.5% BSA and 0.02% sodium azide.
Source	Monoclonal, Mouse,IgG
Purification	The antibody was affinity-purified from mouse antiserum by affinity-chromatography using epitope-specific immunogen.
Dilution	WB 1:500-2000
Concentration	1 mg/ml
Purity	≥90%
Storage Stability	-20°C/1 year
Synonyms	
Observed Band	
Cell Pathway	Cell junction, synapse, postsynaptic cell membrane ; Lipid-anchor, GPI-anchor .
Tissue Specificity	
Function	similarity:Contains 2 Ig-like (immunoglobulin-like) domains.,
Background	This gene encodes a protein which has two immunoglobulin (Ig) domains and is a member of the immunoglobulin superfamily. Proteins in this superfamily are usually found on or in cell membranes and act as receptors in immune response pathways. [provided by RefSeq, Sep 2011],
matters needing attention	Avoid repeated freezing and thawing!

Nanjing BYabscience technology Co.,Ltd

网址: www.njbybio.com

官方热线: 025-5229-8998

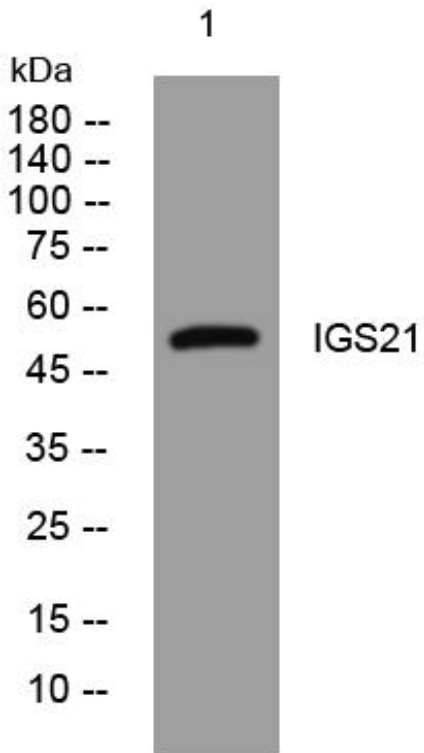
监督电话: 15950492658



Usage suggestions

This product can be used in immunological reaction related experiments. For more information, please consult technical personnel.

Products Images



Western Blot analysis of various cells using IGS21 mouse mAb

Nanjing BYabs science technology Co.,Ltd

网址: www.njbybio.com

官方热线: 025-5229-8998

监督电话: 15950492658