



# AP2S1 mouse mAb

<b>Catalog No</b>	BYmab-11088
<b>Isotype</b>	IgG
<b>Reactivity</b>	Human; Mouse;Rat
<b>Applications</b>	WB
<b>Gene Name</b>	AP2S1 AP17 CLAPS2
<b>Protein Name</b>	AP2S1
<b>Immunogen</b>	Synthesized peptide derived from human AP2S1 AA range: 26-76
<b>Specificity</b>	This antibody detects endogenous levels of AP2S1 at Human/Mouse/Rat
<b>Formulation</b>	Liquid in PBS containing 50% glycerol, 0.5% BSA and 0.02% sodium azide.
<b>Source</b>	Monoclonal, Mouse,IgG
<b>Purification</b>	The antibody was affinity-purified from mouse antiserum by affinity-chromatography using epitope-specific immunogen.
<b>Dilution</b>	WB 1:500-2000
<b>Concentration</b>	1 mg/ml
<b>Purity</b>	≥90%
<b>Storage Stability</b>	-20°C/1 year
<b>Synonyms</b>	
<b>Observed Band</b>	
<b>Cell Pathway</b>	Cell membrane. Membrane, coated pit; Peripheral membrane protein; Cytoplasmic side. AP-2 appears to be excluded from internalizing CCVs and to disengage from sites of endocytosis seconds before internalization of the nascent CCV. .
<b>Tissue Specificity</b>	
<b>Function</b>	function:Component of the adaptor complexes which link clathrin to receptors in coated vesicles. Clathrin-associated protein complexes are believed to interact with the cytoplasmic tails of membrane proteins, leading to their selection and concentration. AP2S1/AP17 is a subunit of the plasma membrane adaptor. The complex binds polyphosphoinositides.,similarity:Belongs to the adaptor complexes small subunit family.,subcellular location:Component of the coat surrounding the cytoplasmic face of coated vesicles in the plasma membrane.,subunit:Adaptor protein complex 2 (AP-2) is a heterotetramer composed of two large adaptins (alpha-type subunit AP2A1 or AP2A2 and beta-type subunit AP2B1), a medium adaptin (mu-type subunit AP2M1) and a

**Nanjing BYabscience technology Co.,Ltd**



small adaptin (sigma-type subunit AP2S1).,

#### Background

One of two major clathrin-associated adaptor complexes, AP-2, is a heterotetramer which is associated with the plasma membrane. This complex is composed of two large chains, a medium chain, and a small chain. This gene encodes the small chain of this complex. Alternative splicing results in multiple transcript variants. [provided by RefSeq, Jul 2014],

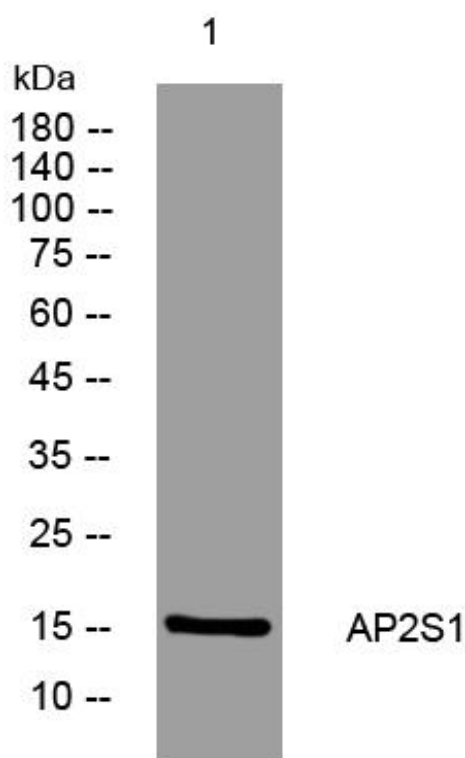
#### matters needing attention

Avoid repeated freezing and thawing!

#### Usage suggestions

This product can be used in immunological reaction related experiments. For more information, please consult technical personnel.

## Products Images



Western Blot analysis of various cells using AP2S1 mouse mAb

Nanjing BYabs science technology Co.,Ltd

网址: [www.njbybio.com](http://www.njbybio.com)

官方热线: 025-5229-8998

监督电话: 15950492658