



PPR3E mouse mAb

Catalog No	BYmab-11074
Isotype	IgG
Reactivity	Human; Mouse;Rat
Applications	WB
Gene Name	PPP1R3E
Protein Name	PPR3E
Immunogen	Synthesized peptide derived from human PPR3E AA range: 210-260
Specificity	This antibody detects endogenous levels of PPR3E at Human/Mouse/Rat
Formulation	Liquid in PBS containing 50% glycerol, 0.5% BSA and 0.02% sodium azide.
Source	Monoclonal, Mouse,IgG
Purification	The antibody was affinity-purified from mouse antiserum by affinity-chromatography using epitope-specific immunogen.
Dilution	WB 1:500-2000
Concentration	1 mg/ml
Purity	≥90%
Storage Stability	-20°C/1 year
Synonyms	
Observed Band	
Cell Pathway	
Tissue Specificity	Expressed in skeletal muscle and heart with barely detectable levels in liver.
Function	domain:The CBM21 domain is known to be involved in the localization to glycogen and is characteristic of some regulatory subunit of phosphatase complexes.,function:Acts as a glycogen-targeting subunit for PP1. PP1 is involved in glycogen metabolism and contributes to the activation of glycogen synthase leading to an increase in glycogen synthesis.,similarity:Contains 1 CBM21 (carbohydrate binding type-21) domain.,tissue specificity:Expressed in skeletal muscle and heart with barely detectable levels in liver.,
Background	

Nanjing BYabscience technology Co.,Ltd

网址: www.njbybio.com

官方热线: 025-5229-8998

监督电话: 15950492658



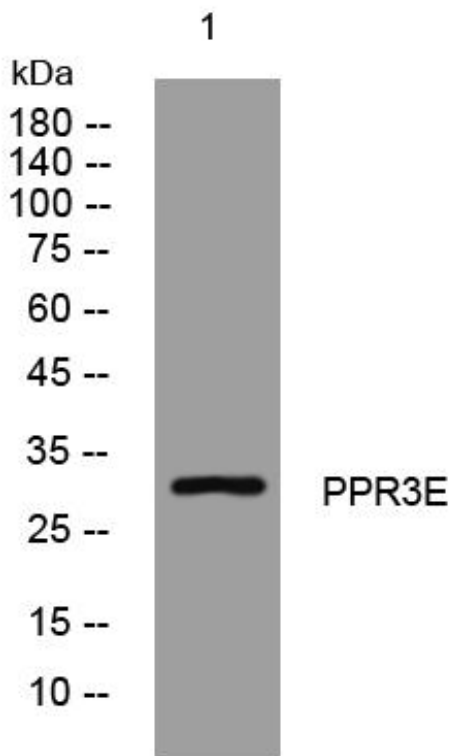
matters needing attention

Avoid repeated freezing and thawing!

Usage suggestions

This product can be used in immunological reaction related experiments. For more information, please consult technical personnel.

Products Images



Western Blot analysis of various cells using PPR3E mouse mAb

Nanjing BYabs science technology Co.,Ltd

网址: www.njbybio.com

官方热线: 025-5229-8998

监督电话: 15950492658