



# EVX2 mouse mAb

Catalog No	BYmab-11063
Isotype	IgG
Reactivity	Human; Mouse
Applications	WB
Gene Name	EVX2
Protein Name	EVX2
Immunogen	Synthesized peptide derived from human EVX2 AA range: 138-188
Specificity	This antibody detects endogenous levels of EVX2 at Human/Mouse
Formulation	Liquid in PBS containing 50% glycerol, 0.5% BSA and 0.02% sodium azide.
Source	Monoclonal, Mouse,IgG
Purification	The antibody was affinity-purified from mouse antiserum by affinity-chromatography using epitope-specific immunogen.
Dilution	WB 1:500-2000
Concentration	1 mg/ml
Purity	≥90%
Storage Stability	-20°C/1 year
Synonyms	
Observed Band	
Cell Pathway	Nucleus.
Tissue Specificity	
Function	developmental stage:Expressed during early embryogenesis and neurogenesis in a biphasic manner.,similarity:Belongs to the even-skipped homeobox family.,similarity:Contains 1 homeobox DNA-binding domain.,
Background	This gene is located at the 5' end of the HOXD gene cluster on chromosome 2. The encoded protein is a homeobox transcription factor that is related to the protein encoded by the Drosophila even-skipped (eve) gene, a member of the pair-rule class of segmentation genes. A 117 kb microdeletion at the 5' end of the HOXD gene cluster, which includes this gene and the HOXD9-HOXD13 genes, causes synpolydactyly, a dominantly inherited disease resulting in limb malformation. [provided by RefSeq, Sep 2009],

Nanjing BYabscience technology Co.,Ltd



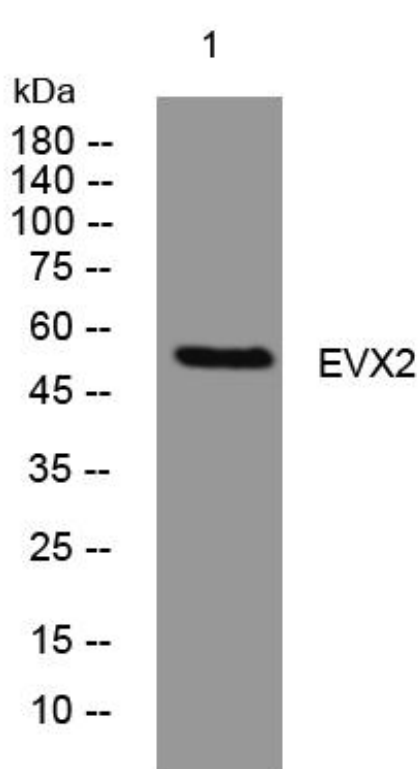
**matters needing attention**

Avoid repeated freezing and thawing!

**Usage suggestions**

This product can be used in immunological reaction related experiments. For more information, please consult technical personnel.

## Products Images



Western Blot analysis of various cells using EVX2 mouse mAb