



# CPLX4 mouse mAb

Catalog No	BYmab-11062
Isotype	IgG
Reactivity	Human; Mouse
Applications	WB
Gene Name	CPLX4
Protein Name	CPLX4
Immunogen	Synthesized peptide derived from human CPLX4 AA range: 47-97
Specificity	This antibody detects endogenous levels of CPLX4 at Human/Mouse
Formulation	Liquid in PBS containing 50% glycerol, 0.5% BSA and 0.02% sodium azide.
Source	Monoclonal, Mouse,IgG
Purification	The antibody was affinity-purified from mouse antiserum by affinity-chromatography using epitope-specific immunogen.
Dilution	WB 1:500-2000
Concentration	1 mg/ml
Purity	≥90%
Storage Stability	-20°C/1 year
Synonyms	
Observed Band	
Cell Pathway	Cell junction, synapse . Cell membrane; Lipid-anchor . Enriched at the synaptic terminal. .
Tissue Specificity	
Function	function:Positively regulates a late step in synaptic vesicle exocytosis.,PTM:Farnesylation mediates presynaptic targeting and is important for function in neurotransmitter release.,similarity:Belongs to the complexin/synaphin family.,subcellular location:Enriched at the synaptic terminal.,subunit:Weakly binds to the SNARE core complex containing SNAP25, VAMP2 and STX1A.,
Background	This gene likely encodes a member of the complexin family. The encoded protein may be involved in synaptic vesicle exocytosis. [provided by RefSeq, Jan 2009],
matters needing attention	Avoid repeated freezing and thawing!

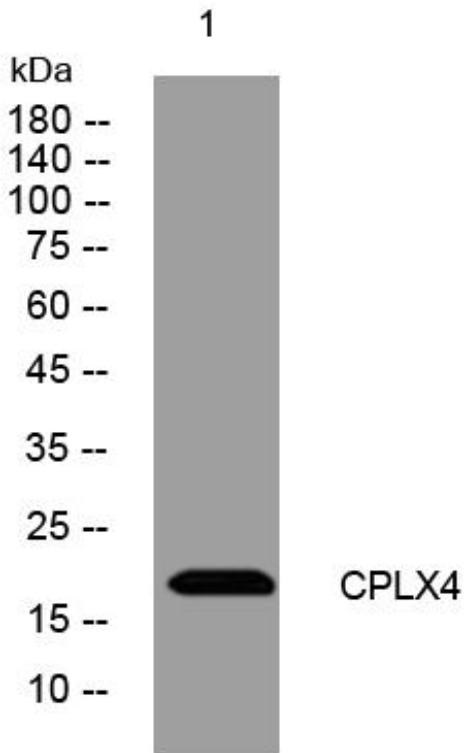
Nanjing BYabscience technology Co.,Ltd



### Usage suggestions

This product can be used in immunological reaction related experiments. For more information, please consult technical personnel.

## Products Images



Western Blot analysis of various cells using CPLX4 mouse mAb

Nanjing BYabs science technology Co.,Ltd

网址: [www.njbybio.com](http://www.njbybio.com)

官方热线: 025-5229-8998

监督电话: 15950492658