



# ICT1 mouse mAb

Catalog No	BYmab-11056
Isotype	IgG
Reactivity	Human; Mouse
Applications	WB
Gene Name	ICT1 DS1
Protein Name	ICT1
Immunogen	Synthesized peptide derived from human ICT1 AA range: 7-57
Specificity	This antibody detects endogenous levels of ICT1 at Human/Mouse
Formulation	Liquid in PBS containing 50% glycerol, 0.5% BSA and 0.02% sodium azide.
Source	Monoclonal, Mouse,IgG
Purification	The antibody was affinity-purified from mouse antiserum by affinity-chromatography using epitope-specific immunogen.
Dilution	WB 1:500-2000
Concentration	1 mg/ml
Purity	≥90%
Storage Stability	-20°C/1 year
Synonyms	
Observed Band	
Cell Pathway	Mitochondrion .
Tissue Specificity	Down-regulated during the in vitro differentiation of HT29-D4 colon carcinoma cells.
Function	similarity:Belongs to the prokaryotic/mitochondrial release factor family.,tissue specificity:Down-regulated during the in vitro differentiation of HT29-D4 colon carcinoma cells.,
Background	The protein encoded by this gene is a peptidyl-tRNA hydrolase and a vital component of the large mitochondrial ribosome. The encoded protein serves as a ribosome release factor for this ribosome, which translates mitochondrial genes. This protein may be responsible for degrading prematurely-terminated polypeptides and for reusing stalled ribosomes. Two transcript variants encoding different isoforms have been found for this gene. [provided by RefSeq, Dec 2014],

Nanjing BYabscience technology Co.,Ltd

网址: [www.njbybio.com](http://www.njbybio.com)

官方热线: 025-5229-8998

监督电话: 15950492658



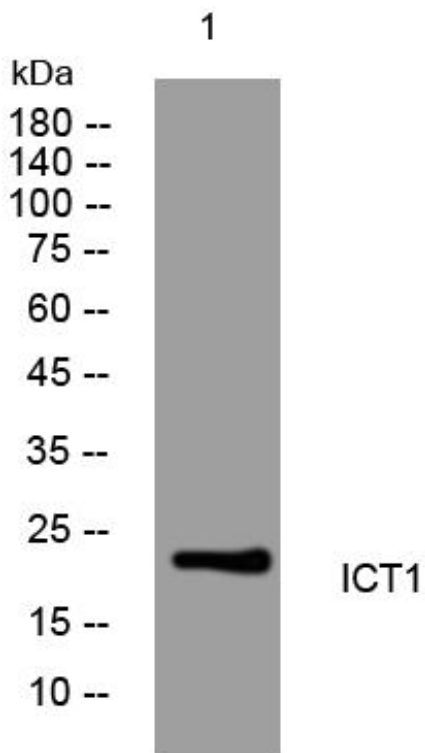
**matters needing attention**

Avoid repeated freezing and thawing!

**Usage suggestions**

This product can be used in immunological reaction related experiments. For more information, please consult technical personnel.

## Products Images



Western Blot analysis of various cells using ICT1 mouse mAb