



LRC26 mouse mAb

Catalog No	BYmab-11055
Isotype	IgG
Reactivity	Human; Mouse;Rat
Applications	WB
Gene Name	LRRC26 CAPC
Protein Name	LRC26
Immunogen	Synthesized peptide derived from human LRC26 AA range: 163-213
Specificity	This antibody detects endogenous levels of LRC26 at Human/Mouse/Rat
Formulation	Liquid in PBS containing 50% glycerol, 0.5% BSA and 0.02% sodium azide.
Source	Monoclonal, Mouse,IgG
Purification	The antibody was affinity-purified from mouse antiserum by affinity-chromatography using epitope-specific immunogen.
Dilution	WB 1:500-2000
Concentration	1 mg/ml
Purity	≥90%
Storage Stability	-20°C/1 year
Synonyms	
Observed Band	
Cell Pathway	Cell membrane; Single-pass type I membrane protein. Cytoplasm, cytoskeleton. Localizes to the cytoplasm when expressed at high levels. .
Tissue Specificity	Isoform 1 is expressed highly in normal prostate and salivary gland, very weakly in colon, pancreas, and intestine, and not at all in other tissues. Isoform 1 is expressed highly in many cancer cell lines and in breast cancer, pancreatic cancer and colon cancer. Isoform 2 is expressed in cancer cell lines.
Function	similarity:Contains 6 LRR (leucine-rich) repeats.,subcellular location:Although predicted to be a single-pass type I membrane protein, this protein localizes to the cytoplasm when expressed at high levels (PubMed:15164053).,tissue specificity:Expressed highly in normal prostate and salivary gland, very weakly in colon, pancreas, and intestine, and not at all in other tissues. Expressed highly in many cancer cell lines and in breast cancer, pancreatic cancer and colon cancer.,
Background	

Nanjing BYabscience technology Co.,Ltd

网址: www.njbybio.com

官方热线: 025-5229-8998

监督电话: 15950492658



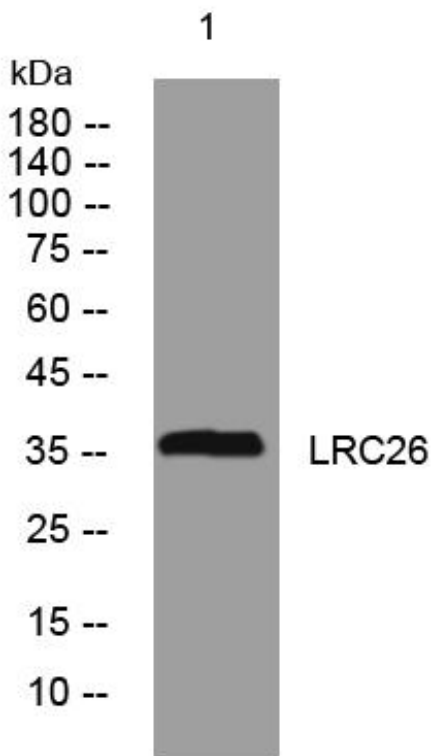
matters needing attention

Avoid repeated freezing and thawing!

Usage suggestions

This product can be used in immunological reaction related experiments. For more information, please consult technical personnel.

Products Images



Western Blot analysis of various cells using LRC26 mouse mAb