



# NUDC2 mouse mAb

Catalog No	BYmab-11053
Isotype	IgG
Reactivity	Human; Mouse;Rat
Applications	WB
Gene Name	NUDCD2
Protein Name	NUDC2
Immunogen	Synthesized peptide derived from human NUDC2 AA range: 90-140
Specificity	This antibody detects endogenous levels of NUDC2 at Human/Mouse/Rat
Formulation	Liquid in PBS containing 50% glycerol, 0.5% BSA and 0.02% sodium azide.
Source	Monoclonal, Mouse,IgG
Purification	The antibody was affinity-purified from mouse antiserum by affinity-chromatography using epitope-specific immunogen.
Dilution	WB 1:500-2000
Concentration	1 mg/ml
Purity	≥90%
Storage Stability	-20°C/1 year
Synonyms	
Observed Band	
Cell Pathway	Chromosome, centromere, kinetochore . Cytoplasm, cytoskeleton, microtubule organizing center, centrosome . Cytoplasm, cytoskeleton, spindle pole . Associates with centrosomes in interphase and to spindle poles and kinetochores during mitosis.
Tissue Specificity	
Function	similarity:Contains 1 CS domain.,
Background	
matters needing attention	Avoid repeated freezing and thawing!

Nanjing BYabscience technology Co.,Ltd

网址: [www.njbybio.com](http://www.njbybio.com)

官方热线: 025-5229-8998

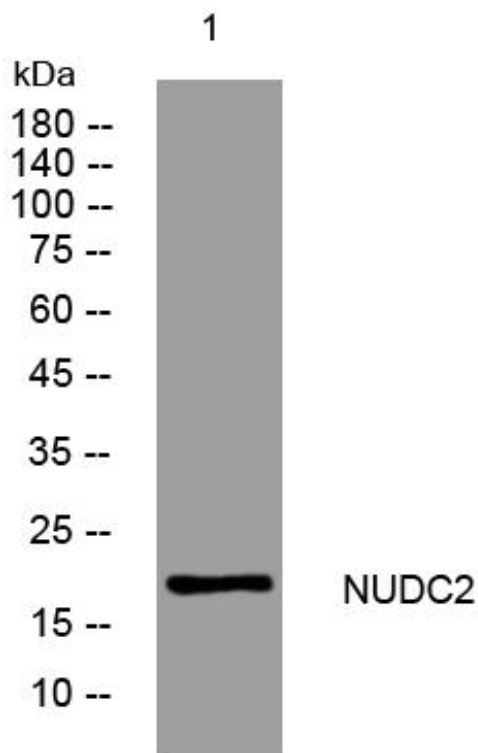
监督电话: 15950492658



### Usage suggestions

This product can be used in immunological reaction related experiments. For more information, please consult technical personnel.

## Products Images



Western Blot analysis of various cells using NUDC2 mouse mAb

Nanjing BYabs science technology Co.,Ltd

网址: [www.njbybio.com](http://www.njbybio.com)

官方热线: 025-5229-8998

监督电话: 15950492658