



ILVBL mouse mAb

Catalog No	BYmab-11042
Isotype	IgG
Reactivity	Human; Mouse
Applications	WB
Gene Name	ILVBL AHAS
Protein Name	ILVBL
Immunogen	Synthesized peptide derived from human ILVBL AA range: 87-137
Specificity	This antibody detects endogenous levels of ILVBL at Human/Mouse
Formulation	Liquid in PBS containing 50% glycerol, 0.5% BSA and 0.02% sodium azide.
Source	Monoclonal, Mouse,IgG
Purification	The antibody was affinity-purified from mouse antiserum by affinity-chromatography using epitope-specific immunogen.
Dilution	WB 1:500-2000
Concentration	1 mg/ml
Purity	≥90%
Storage Stability	-20°C/1 year
Synonyms	
Observed Band	
Cell Pathway	Endoplasmic reticulum membrane ; Single-pass membrane protein .
Tissue Specificity	Expressed in all tissues tested, with highest expression in heart, pancreas and placenta.
Function	cofactor: Binds 1 magnesium ion per subunit.,cofactor: Binds 1 thiamine pyrophosphate per subunit.,sequence caution: Sequence of unknown origin at the C-terminus.,sequence caution: Translation N-terminally extended.,similarity: Belongs to the TPP enzyme family.,tissue specificity: Expressed in all tissues tested, with highest expression in heart, pancreas and placenta.,
Background	The protein encoded by this gene shares similarity with several thiamine pyrophosphate-binding proteins identified in bacteria, yeast, and plants. The highest degree of similarity is found with bacterial acetolactate synthases (AHAS), which are enzymes that catalyze the first step in branched-chain amino acid biosynthesis. [provided by RefSeq, Jul 2008],

Nanjing BYabscience technology Co.,Ltd



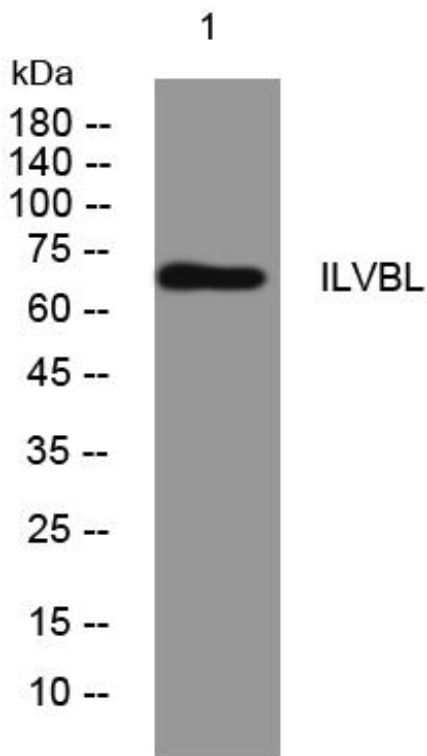
matters needing attention

Avoid repeated freezing and thawing!

Usage suggestions

This product can be used in immunological reaction related experiments. For more information, please consult technical personnel.

Products Images



Western Blot analysis of various cells using ILVBL mouse mAb

Nanjing BYabs science technology Co.,Ltd

网址: www.njbybio.com

官方热线: 025-5229-8998

监督电话: 15950492658