



# LCOR mouse mAb

<b>Catalog No</b>	BYmab-11015
<b>Isotype</b>	IgG
<b>Reactivity</b>	Human; Mouse
<b>Applications</b>	WB
<b>Gene Name</b>	LCOR KIAA1795 MLR2
<b>Protein Name</b>	LCOR
<b>Immunogen</b>	Synthesized peptide derived from human LCOR AA range: 244-294
<b>Specificity</b>	This antibody detects endogenous levels of LCOR at Human/Mouse
<b>Formulation</b>	Liquid in PBS containing 50% glycerol, 0.5% BSA and 0.02% sodium azide.
<b>Source</b>	Monoclonal, Mouse,IgG
<b>Purification</b>	The antibody was affinity-purified from mouse antiserum by affinity-chromatography using epitope-specific immunogen.
<b>Dilution</b>	WB 1:500-2000
<b>Concentration</b>	1 mg/ml
<b>Purity</b>	≥90%
<b>Storage Stability</b>	-20°C/1 year
<b>Synonyms</b>	
<b>Observed Band</b>	
<b>Cell Pathway</b>	Nucleus .
<b>Tissue Specificity</b>	Ubiquitous.
<b>Function</b>	function:May act as transcription activator that binds DNA elements with the sequence 5'-CCCTATCGATCGATCTCTACCT-3' (By similarity). Repressor of ligand-dependent transcription activation by target nuclear receptors. Repressor of ligand-dependent transcription activation by ESR1, ESR2, NR3C1, PGR, RARA, RARB, RARG, RXRA and VDR.,similarity:Contains 1 HTH psq-type DNA-binding domain.,subunit:Interacts with ESR1 and ESR2 in the presence of estradiol. Interacts with CTBP1, HDAC3 and HDAC6. Component of a large corepressor complex that contains about 20 proteins, including CTBP1, CTBP2, HDAC1 and HDAC2.,tissue specificity:Ubiquitous.,
<b>Background</b>	LCOR is a transcriptional corepressor widely expressed in fetal and adult tissues that is recruited to agonist-bound nuclear receptors through a single LxxLL motif,

**Nanjing BYabscience technology Co.,Ltd**



also referred to as a nuclear receptor (NR) box (Fernandes et al., 2003 [PubMed 12535528]).[supplied by OMIM, Mar 2008],

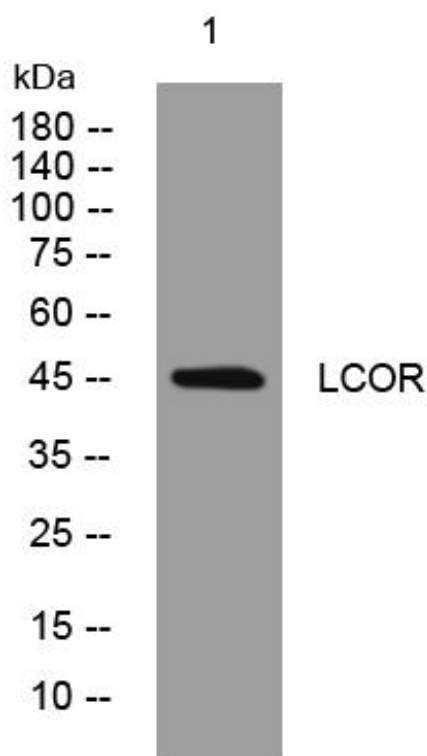
**matters needing attention**

Avoid repeated freezing and thawing!

**Usage suggestions**

This product can be used in immunological reaction related experiments. For more information, please consult technical personnel.

## Products Images



Western Blot analysis of various cells using LCOR mouse mAb