



PARM1 mouse mAb

Catalog No	BYmab-11000
Isotype	IgG
Reactivity	Human; Mouse;Rat
Applications	WB
Gene Name	PARM1 UNQ1879/PRO4322
Protein Name	PARM1
Immunogen	Synthesized peptide derived from human PARM1 AA range: 147-197
Specificity	This antibody detects endogenous levels of PARM1 at Human/Mouse/Rat
Formulation	Liquid in PBS containing 50% glycerol, 0.5% BSA and 0.02% sodium azide.
Source	Monoclonal, Mouse,IgG
Purification	The antibody was affinity-purified from mouse antiserum by affinity-chromatography using epitope-specific immunogen.
Dilution	WB 1:500-2000
Concentration	1 mg/ml
Purity	≥90%
Storage Stability	-20°C/1 year
Synonyms	
Observed Band	
Cell Pathway	Cell membrane ; Single-pass type I membrane protein . Golgi apparatus membrane ; Single-pass type I membrane protein . Endosome membrane ; Single-pass type I membrane protein .
Tissue Specificity	Widely expressed with highest levels in heart, kidney and placenta.
Function	function:May be involved in a survival program enabling certain prostatic cells to resist apoptosis.,
Background	
matters needing attention	Avoid repeated freezing and thawing!

Nanjing BYabscience technology Co.,Ltd

网址: www.njbybio.com

官方热线: 025-5229-8998

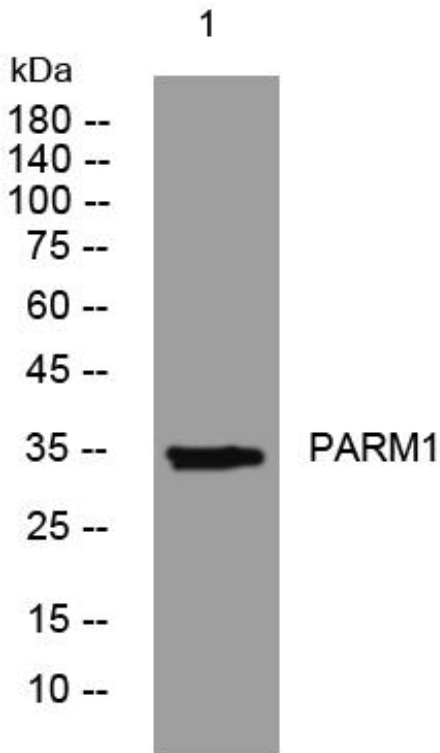
监督电话: 15950492658



Usage suggestions

This product can be used in immunological reaction related experiments. For more information, please consult technical personnel.

Products Images



Western Blot analysis of various cells using PARM1 mouse mAb

Nanjing BYabs science technology Co.,Ltd

网址: www.njbybio.com

官方热线: 025-5229-8998

监督电话: 15950492658