



# SIG12 mouse mAb

Catalog No	BYmab-10989
Isotype	IgG
Reactivity	Human; Mouse
Applications	WB
Gene Name	SIGLEC12 SIGLECL1 SLG UNQ9215/PRO34042
Protein Name	SIG12
Immunogen	Synthesized peptide derived from human SIG12 AA range: 200-250
Specificity	This antibody detects endogenous levels of SIG12 at Human/Mouse
Formulation	Liquid in PBS containing 50% glycerol, 0.5% BSA and 0.02% sodium azide.
Source	Monoclonal, Mouse,IgG
Purification	The antibody was affinity-purified from mouse antiserum by affinity-chromatography using epitope-specific immunogen.
Dilution	WB 1:500-2000
Concentration	1 mg/ml
Purity	≥90%
Storage Stability	-20°C/1 year
Synonyms	
Observed Band	
Cell Pathway	Membrane; Single-pass type I membrane protein.
Tissue Specificity	Isoform Short is highly expressed in spleen, small intestine and adrenal gland; it is lower expressed in thyroid, placenta, brain, stomach, bone marrow, spinal cord and breast. Isoform Long is highly expressed in spleen, small intestine and bone marrow; it is lower expressed in thyroid, placenta, thymus, trachea, stomach, lung, adrenal gland, fetal brain and testis.
Function	domain:Contains 1 copy of a cytoplasmic motif that is referred to as the immunoreceptor tyrosine-based inhibitor motif (ITIM). This motif is involved in modulation of cellular responses. The phosphorylated ITIM motif can bind the SH2 domain of several SH2-containing phosphatases.,function:Putative adhesion molecule that mediates sialic-acid dependent binding to cells. The sialic acid recognition site may be masked by cis interactions with sialic acids on the same cell surface.,online information:Siglec-L1,similarity:Belongs to the immunoglobulin superfamily. SIGLEC (sialic acid binding Ig-like lectin) family.,similarity:Contains 2 Ig-like C2-type (immunoglobulin-like) domains.,similarity:Contains 2 Ig-like V-type

Nanjing BYabscience technology Co.,Ltd



(immunoglobulin-like) domains.,tissue specificity:The short isoform is highly expressed in spleen, small intestine and adrenal gland; it is lower expressed in thyroid, placenta,

## Background

Sialic acid-binding immunoglobulin-like lectins (SIGLECs) are a family of cell surface proteins belonging to the immunoglobulin superfamily. They mediate protein-carbohydrate interactions by selectively binding to different sialic acid moieties present on glycolipids and glycoproteins. This gene encodes a member of the SIGLEC3-like subfamily of SIGLECs. Members of this subfamily are characterized by an extracellular V-set immunoglobulin-like domain followed by two C2-set immunoglobulin-like domains, and the cytoplasmic tyrosine-based motifs ITIM and SLAM-like. The encoded protein, upon tyrosine phosphorylation, has been shown to recruit the Src homology 2 domain-containing protein-tyrosine phosphatases SHP1 and SHP2. It has been suggested that the protein is involved in the negative regulation of macrophage signaling by functioning as an inhibitory receptor. This gene is located in a cluster with other SIGLEC3-like genes on 19q13.4. Alternative splicing results in multiple transcript variants. [provided by RefSeq, Aug 2013],

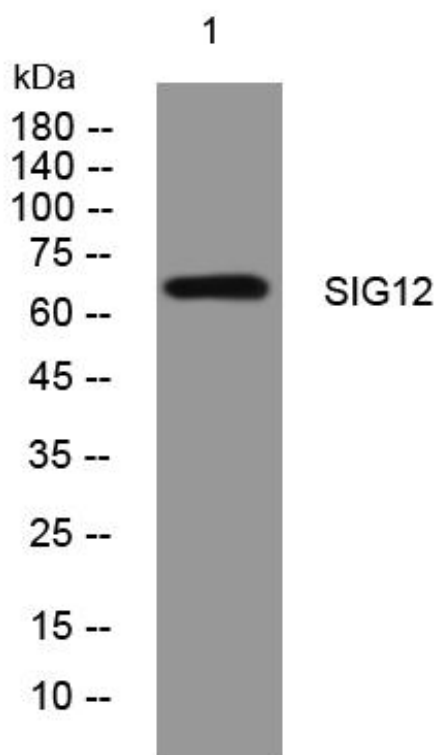
## matters needing attention

Avoid repeated freezing and thawing!

## Usage suggestions

This product can be used in immunological reaction related experiments. For more information, please consult technical personnel.

## Products Images



Western Blot analysis of various cells using SIG12 mouse mAb