



GG12C mouse mAb

Catalog No	BYmab-10986
Isotype	IgG
Reactivity	Human;Rat;Mouse;
Applications	WB
Gene Name	GAGE12B; GAGE12C; GAGE12D; GAGE12E
Protein Name	GG12C
Immunogen	Synthesized peptide derived from human GG12C AA range: 42-92
Specificity	This antibody detects endogenous levels of GG12C at Human
Formulation	Liquid in PBS containing 50% glycerol, 0.5% BSA and 0.02% sodium azide.
Source	Monoclonal, Mouse,IgG
Purification	The antibody was affinity-purified from mouse antiserum by affinity-chromatography using epitope-specific immunogen.
Dilution	WB 1:500-2000
Concentration	1 mg/ml
Purity	≥90%
Storage Stability	-20°C/1 year
Synonyms	
Observed Band	
Cell Pathway	
Tissue Specificity	
Function	function:Antigen, recognized on melanoma by autologous cytolytic T-lymphocytes.,function:Antigen, recognized on melanoma by autologous cytolytic T-lymphocytes. Completely silent in normal adult tissues, except testis.,similarity:Belongs to the GAGE family.,tissue specificity:Expressed in a variety of tumor tissues but not in normal tissues, except testis.,tissue specificity:Expressed in some prostate cancer tissues but not in normal prostate tissue.,tissue specificity:Not expressed in normal tissues, except in testis, but expressed by a large proportion of tumors of various histological origins.,
Background	

Nanjing BYabscience technology Co.,Ltd

网址: www.njbybio.com

官方热线: 025-5229-8998

监督电话: 15950492658



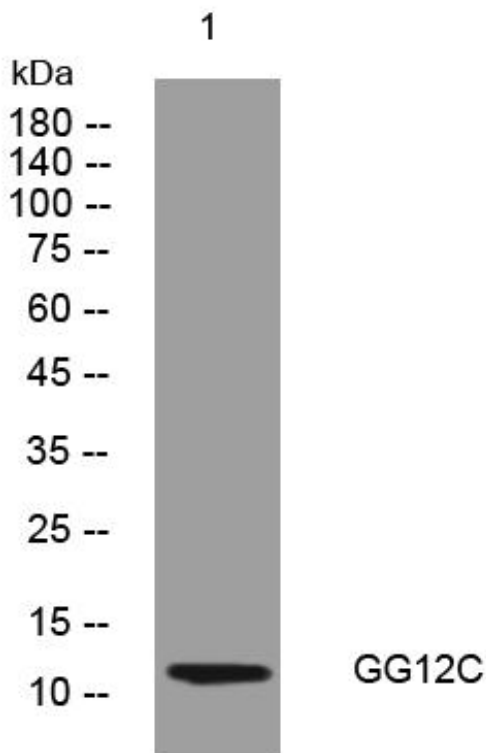
matters needing attention

Avoid repeated freezing and thawing!

Usage suggestions

This product can be used in immunological reaction related experiments. For more information, please consult technical personnel.

Products Images



Western Blot analysis of various cells using GG12C mouse mAb