



TRI40 mouse mAb

Catalog No	BYmab-10983
Isotype	IgG
Reactivity	Human; Mouse; Rat
Applications	WB
Gene Name	TRIM40 RNF35
Protein Name	TRI40
Immunogen	Synthesized peptide derived from human TRI40 AA range: 85-135
Specificity	This antibody detects endogenous levels of TRI40 at Human/Mouse/Rat
Formulation	Liquid in PBS containing 50% glycerol, 0.5% BSA and 0.02% sodium azide.
Source	Monoclonal, Mouse, IgG
Purification	The antibody was affinity-purified from mouse antiserum by affinity-chromatography using epitope-specific immunogen.
Dilution	WB 1:500-2000
Concentration	1 mg/ml
Purity	≥90%
Storage Stability	-20°C/1 year
Synonyms	
Observed Band	
Cell Pathway	intracellular, IκB kinase complex,
Tissue Specificity	Highly expressed in normal gastrointestinal epithelia but that is down-regulated in gastrointestinal carcinomas and chronic inflammatory lesions of the gastrointestinal tract.
Function	similarity: Belongs to the TRIM/RBCC family., similarity: Contains 1 B box-type zinc finger., similarity: Contains 1 RING-type zinc finger.,
Background	This gene encodes a member of the tripartite motif (TRIM) protein family. The encoded protein may play a role as a negative regulator against inflammation and carcinogenesis in the gastrointestinal tract. Alternatively spliced transcript variants that encode different protein isoforms have been described. [provided by RefSeq, Feb 2014],
matters needing attention	Avoid repeated freezing and thawing!

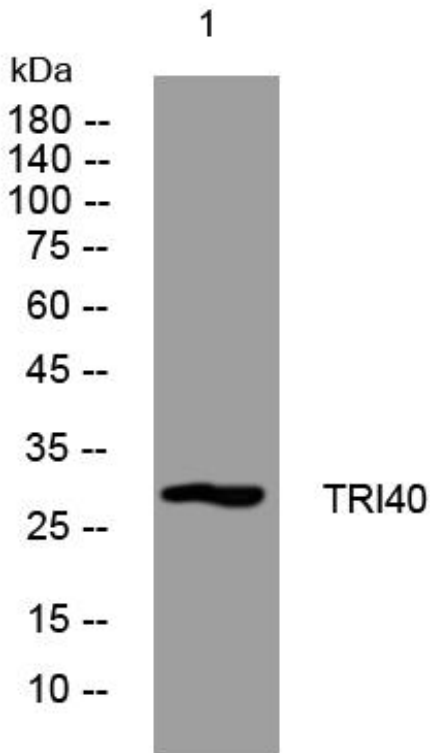
Nanjing BYabscience technology Co., Ltd



Usage suggestions

This product can be used in immunological reaction related experiments. For more information, please consult technical personnel.

Products Images



Western Blot analysis of various cells using TRI40 mouse mAb

Nanjing BYabs science technology Co.,Ltd

网址: www.njbybio.com

官方热线: 025-5229-8998

监督电话: 15950492658