



## MD12L mouse mAb

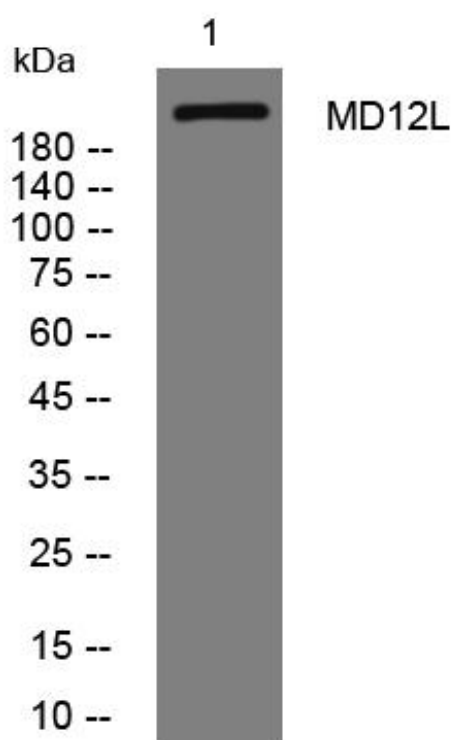
Catalog No	BYmab-10972
Isotype	IgG
Reactivity	Human; Mouse
Applications	WB
Gene Name	MED12L KIAA1635 TNRC11L TRALP TRALPUSH PRO0314
Protein Name	MD12L
Immunogen	Synthesized peptide derived from human MD12L AA range: 1848-1898
Specificity	This antibody detects endogenous levels of MD12L at Human/Mouse
Formulation	Liquid in PBS containing 50% glycerol, 0.5% BSA and 0.02% sodium azide.
Source	Monoclonal, Mouse,IgG
Purification	The antibody was affinity-purified from mouse antiserum by affinity-chromatography using epitope-specific immunogen.
Dilution	WB 1:500-2000
Concentration	1 mg/ml
Purity	≥90%
Storage Stability	-20°C/1 year
Synonyms	
Observed Band	
Cell Pathway	Nucleus .
Tissue Specificity	
Function	function:May be a component of the Mediator complex, a coactivator involved in the regulated transcription of nearly all RNA polymerase II-dependent genes. Mediator functions as a bridge to convey information from gene-specific regulatory proteins to the basal RNA polymerase II transcription machinery. Mediator is recruited to promoters by direct interactions with regulatory proteins and serves as a scaffold for the assembly of a functional preinitiation complex with RNA polymerase II and the general transcription factors.,sequence caution:Contaminating sequence. Sequence of unknown origin in the N-terminal part and potential poly-A sequence.,similarity:Belongs to the Mediator complex subunit 12 family.,subunit:May be a component of the Mediator complex, which is known to be composed of MED1, MED4, MED6, MED7, MED8, MED9, MED10, MED11, MED12, MED13, MED13L, MED14, MED15, MED16, MED17, ME

Nanjing BYabscience technology Co.,Ltd



<b>Background</b>	The protein encoded by this gene is part of the Mediator complex, which is involved in transcriptional coactivation of nearly all RNA polymerase II-dependent genes. The Mediator complex links gene-specific transcriptional activators with the basal transcription machinery. [provided by RefSeq, May 2010],
<b>matters needing attention</b>	Avoid repeated freezing and thawing!
<b>Usage suggestions</b>	This product can be used in immunological reaction related experiments. For more information, please consult technical personnel.

## Products Images



Western Blot analysis of various cells using MD12L mouse mAb