



FBW1B mouse mAb

Catalog No	BYmab-10959
Isotype	IgG
Reactivity	Human; Mouse
Applications	WB
Gene Name	FBXW11 BTRCP2 FBW1B FBXW1B KIAA0696
Protein Name	FBW1B
Immunogen	Synthesized peptide derived from human FBW1B AA range: 464-514
Specificity	This antibody detects endogenous levels of FBW1B at Human/Mouse
Formulation	Liquid in PBS containing 50% glycerol, 0.5% BSA and 0.02% sodium azide.
Source	Monoclonal, Mouse,IgG
Purification	The antibody was affinity-purified from mouse antiserum by affinity-chromatography using epitope-specific immunogen.
Dilution	WB 1:500-2000
Concentration	1 mg/ml
Purity	≥90%
Storage Stability	-20°C/1 year
Synonyms	
Observed Band	
Cell Pathway	Cytoplasm . Nucleus .
Tissue Specificity	
Function	function:Substrate recognition component of a SCF (SKP1-CUL1-F-box protein) E3 ubiquitin-protein ligase complex which mediates the ubiquitination and subsequent proteasomal degradation of target proteins. Probably recognizes and binds to phosphorylated target proteins. SCF(FBXW11) mediates the ubiquitination of CTNNB1 and participates in Wnt signaling. SCF(FBXW11) mediates the ubiquitination of NFKB1A, the degradation frees the associated NFKB1 to translocate into the nucleus and to activate transcription. SCF(FBXW11) mediates the ubiquitination of IFNAR1.,similarity:Contains 1 F-box domain.,similarity:Contains 7 WD repeats.,subunit:Self-associates. Component of the SCF(FBXW11) complex formed of CUL1, SKP1A, RBX1 and a FBXW11 dimer. Interacts with BTRC. Interacts with phosphorylated ubiquitination substrates CTNNB1, NFKB1A, IFNAR1; the interaction requires the

Nanjing BYabscience technology Co.,Ltd



phosphorylation of the two

Background

This gene encodes a member of the F-box protein family which is characterized by an approximately 40 amino acid motif, the F-box. The F-box proteins constitute one of the four subunits of ubiquitin protein ligase complex called SCFs (SKP1-cullin-F-box), which function in phosphorylation-dependent ubiquitination. The F-box proteins are divided into 3 classes: Fbws containing WD-40 domains, Fbls containing leucine-rich repeats, and Fbxs containing either different protein-protein interaction modules or no recognizable motifs. The protein encoded by this gene belongs to the Fbws class and, in addition to an F-box, contains multiple WD40 repeats. This gene contains at least 14 exons, and its alternative splicing generates 3 transcript variants diverging at the presence/absence of two alternate exons. [provided by RefSeq, Jul 2008],

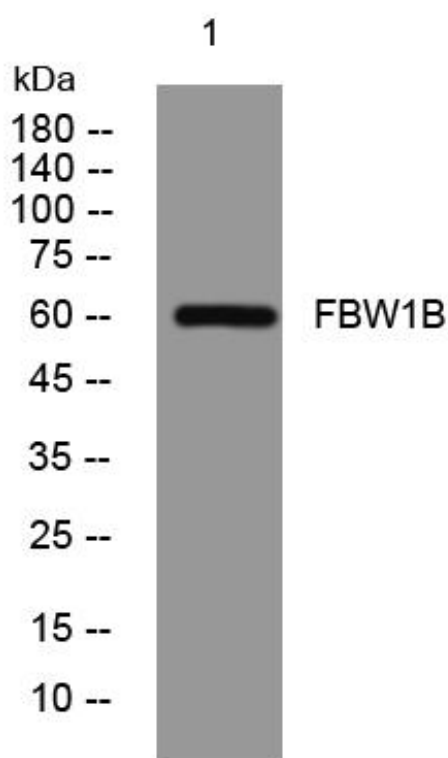
matters needing attention

Avoid repeated freezing and thawing!

Usage suggestions

This product can be used in immunological reaction related experiments. For more information, please consult technical personnel.

Products Images



Western Blot analysis of various cells using FBW1B mouse mAb

Nanjing BYabscience technology Co.,Ltd

网址: www.njbybio.com

官方热线: 025-5229-8998

监督电话: 15950492658