



# BRD1 mouse mAb

Catalog No	BYmab-10945
Isotype	IgG
Reactivity	Human;Rat;Mouse;
Applications	WB
Gene Name	BRD1 BRL BRPF2
Protein Name	BRD1
Immunogen	Synthesized peptide derived from human BRD1 AA range: 399-449
Specificity	This antibody detects endogenous levels of BRD1 at Human
Formulation	Liquid in PBS containing 50% glycerol, 0.5% BSA and 0.02% sodium azide.
Source	Monoclonal, Mouse,IgG
Purification	The antibody was affinity-purified from mouse antiserum by affinity-chromatography using epitope-specific immunogen.
Dilution	WB 1:500-2000
Concentration	1 mg/ml
Purity	≥90%
Storage Stability	-20°C/1 year
Synonyms	
Observed Band	
Cell Pathway	Nucleus . Chromosome . Localizes to transcription start sites. .
Tissue Specificity	Highly expressed in testis.
Function	function:Component of the MOZ/MORF complex which has a histone H3 acetyltransferase activity.,similarity:Contains 1 bromo domain.,similarity:Contains 1 PHD-type zinc finger.,similarity:Contains 1 PWWP domain.,subunit:Component of the MOZ/MORF composed at least of ING5, MYST3/MOZ, MYST4/MORF and one of BRPF1, BRD1/BRPF2 and BRPF3.,tissue specificity:Highly expressed in testis.,
Background	This gene encodes a bromodomain-containing protein that localizes to the nucleus and can interact with DNA and histone tails. The encoded protein is a component of the MOZ/MORF acetyltransferase complex and can stimulate acetylation of histones H3 and H4, thereby potentially playing a role in gene activation. Variation in this gene is associated with schizophrenia and bipolar

Nanjing BYabscience technology Co.,Ltd



disorder in some study populations. Alternative splicing results in multiple transcript variants. [provided by RefSeq, Feb 2015],

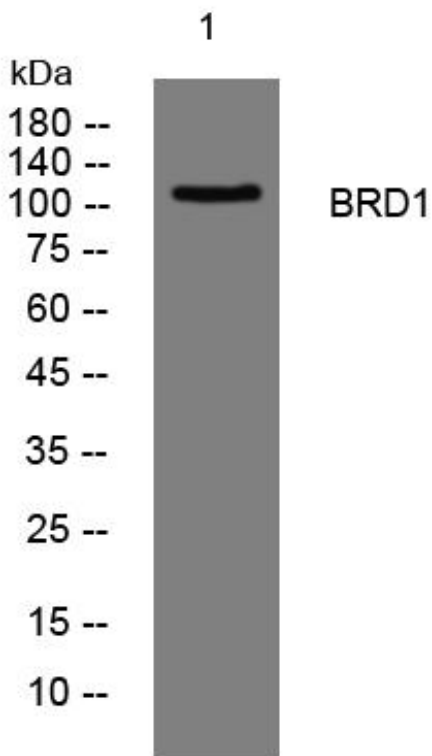
**matters needing attention**

Avoid repeated freezing and thawing!

**Usage suggestions**

This product can be used in immunological reaction related experiments. For more information, please consult technical personnel.

## Products Images



Western Blot analysis of various cells using BRD1 mouse mAb