



# ODF3A mouse mAb

|                           |  |
|---------------------------|--|
| <b>Catalog No</b>         | BYmab-10940  |
| <b>Isotype</b>            | IgG  |
| <b>Reactivity</b>         | Human; Mouse   |
| <b>Applications</b>       | WB   |
| <b>Gene Name</b>          | ODF3 SHIPPO1 TISP50  |
| <b>Protein Name</b>       | ODF3A  |
| <b>Immunogen</b>          | Synthesized peptide derived from human ODF3A AA range: 160-210   |
| <b>Specificity</b>        | This antibody detects endogenous levels of ODF3A at Human/Mouse  |
| <b>Formulation</b>        | Liquid in PBS containing 50% glycerol, 0.5% BSA and 0.02% sodium azide.  |
| <b>Source</b>             | Monoclonal, Mouse,IgG  |
| <b>Purification</b>       | The antibody was affinity-purified from mouse antiserum by affinity-chromatography using epitope-specific immunogen.   |
| <b>Dilution</b>           | WB 1:500-2000  |
| <b>Concentration</b>      | 1 mg/ml  |
| <b>Purity</b>             | ≥90%   |
| <b>Storage Stability</b>  | -20°C/1 year   |
| <b>Synonyms</b>           |  |
| <b>Observed Band</b>      |  |
| <b>Cell Pathway</b>       | Cytoplasm . Expressed in the cytoplasmic lobe of spermatids. .   |
| <b>Tissue Specificity</b> | Testis-specific.   |
| <b>Function</b>           | function:Outer dense fibers are filamentous structures located on the outside of the axoneme in the midpiece and principal piece of the mammalian sperm tail. May help to maintain the passive elastic structures and elastic recoil of the sperm tail.,miscellaneous:'Shippo' is a Japanese word for tail.,similarity:Belongs to the ODF3 family.,similarity:Contains 2 DUF1309 repeats.,subcellular location:Expressed in the cytoplasmic lobe of spermatids.,tissue specificity:Testis-specific., |
| <b>Background</b>         | ODF3 is a component of sperm flagella outer dense fibers, which add stiffness, elastic recoil, and protection against shearing forces during sperm movement.[supplied by OMIM, Apr 2004],  |

**Nanjing BYabscience technology Co.,Ltd**

网址: [www.njbybio.com](http://www.njbybio.com)

官方热线: 025-5229-8998

监督电话: 15950492658



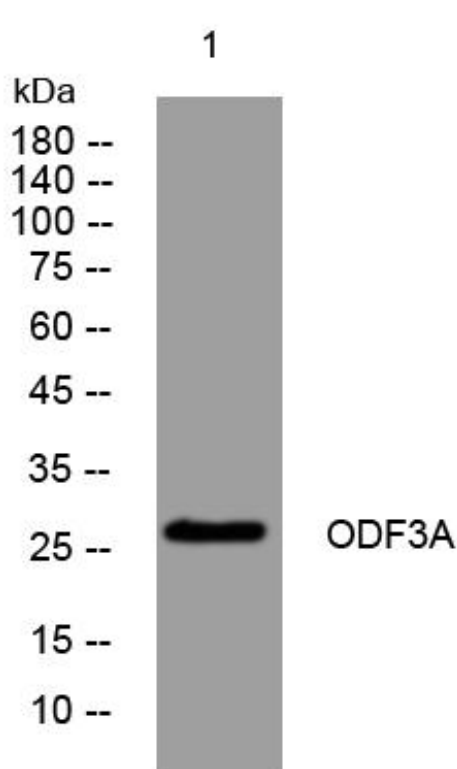
**matters needing attention**

Avoid repeated freezing and thawing!

**Usage suggestions**

This product can be used in immunological reaction related experiments. For more information, please consult technical personnel.

## Products Images



Western Blot analysis of various cells using ODF3A mouse mAb