



CKAP5 mouse mAb

Catalog No	BYmab-10937
Isotype	IgG
Reactivity	Human; Mouse
Applications	WB
Gene Name	CKAP5 KIAA0097
Protein Name	CKAP5
Immunogen	Synthesized peptide derived from human CKAP5 AA range: 1446-1496
Specificity	This antibody detects endogenous levels of CKAP5 at Human/Mouse
Formulation	Liquid in PBS containing 50% glycerol, 0.5% BSA and 0.02% sodium azide.
Source	Monoclonal, Mouse,IgG
Purification	The antibody was affinity-purified from mouse antiserum by affinity-chromatography using epitope-specific immunogen.
Dilution	WB 1:500-2000
Concentration	1 mg/ml
Purity	≥90%
Storage Stability	-20°C/1 year
Synonyms	
Observed Band	
Cell Pathway	Cytoplasm, cytoskeleton, microtubule organizing center, centrosome . Cytoplasm, cytoskeleton, spindle pole . Cytoplasm, cytoskeleton, spindle . Chromosome, centromere, kinetochore . Detected on centrosomes and kinetochores during interphase and mitosis independently from TACC3 and clathrin. Located to spindle poles and microtubules during mitosis. In complex with TACC3 localized to microtubule plus-ends in mitosis and interphase. In complex with TACC3 and clathrin localized to inter-microtubule bridges in mitotic spindles. Accumulation sites at microtubule plus ends protruded approximately 100 nm from MAPRE1/EB1 sites in interphase cells. .
Tissue Specificity	Overexpressed in hepatomas and colonic tumors. Also expressed in skeletal muscle, brain, heart, placenta, lung, liver, kidney and pancreas. Expression is elevated in the brain; highly expressed in the Purkinje cell bodies of the cerebellum.
Function	function:Plays a major role in organizing spindle poles.,sequence caution:Contaminating sequence. Potential poly-A sequence.,similarity:Belongs

Nanjing BYabscience technology Co.,Ltd



to the TOG/XMAP215 family.,similarity:Contains 10 HEAT repeats.,subunit:Interacts with TACC1.,tissue specificity:Over-expressed in hepatomas and colonic tumors. Also expressed in skeletal muscle, brain, heart, placenta, lung, liver, kidney and pancreas.,

Background

This gene encodes a cytoskeleton-associated protein which belongs to the TOG/XMAP215 family. The N-terminal half of this protein contains a microtubule-binding domain and the C-terminal half contains a KXGS motif for binding tubulin dimers. This protein has two distinct roles in spindle formation; it protects kinetochore microtubules from depolymerization and plays an essential role in centrosomal microtubule assembly. This protein may be necessary for the proper interaction of microtubules with the cell cortex for directional cell movement. It also plays a role in translation of the myelin basic protein (MBP) mRNA by interacting with heterogeneous nuclear ribonucleoprotein (hnRNP) A2, which associates with MBP. Alternatively spliced transcript variants encoding different isoforms have been identified. [provided by RefSeq, Aug 2011],

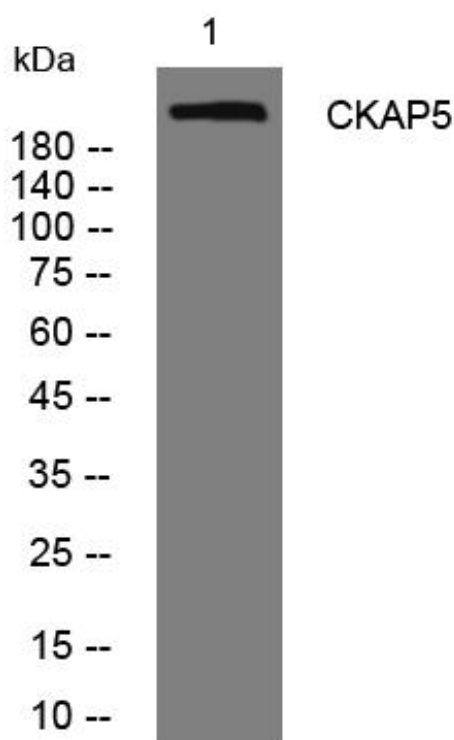
matters needing attention

Avoid repeated freezing and thawing!

Usage suggestions

This product can be used in immunological reaction related experiments. For more information, please consult technical personnel.

Products Images



Western Blot analysis of various cells using CKAP5 mouse mAb

Nanjing BYabs science technology Co.,Ltd

网址: www.njbybio.com

官方热线: 025-5229-8998

监督电话: 15950492658