



IER5 mouse mAb

Catalog No	BYmab-10933
Isotype	IgG
Reactivity	Human; Mouse
Applications	WB
Gene Name	IER5 PP4583 SBBI48
Protein Name	IER5
Immunogen	Synthesized peptide derived from human IER5 AA range: 28-78
Specificity	This antibody detects endogenous levels of IER5 at Human/Mouse
Formulation	Liquid in PBS containing 50% glycerol, 0.5% BSA and 0.02% sodium azide.
Source	Monoclonal, Mouse,IgG
Purification	The antibody was affinity-purified from mouse antiserum by affinity-chromatography using epitope-specific immunogen.
Dilution	WB 1:500-2000
Concentration	1 mg/ml
Purity	≥90%
Storage Stability	-20°C/1 year
Synonyms	
Observed Band	
Cell Pathway	Nucleus . Cytoplasm . Predominantly cytoplasmic (PubMed:25816751). Translocated in the nucleus during heat shock (PubMed:25816751). .
Tissue Specificity	Expressed in acute myeloid leukemia (AML) cells.
Function	similarity:Belongs to the IER family.,
Background	This gene encodes a protein that is similar to other immediate early response proteins. In the mouse, a similar gene may play an important role in mediating the cellular response to mitogenic signals. Studies in rats found the expression of a similar gene to be increased after waking and sleep deprivation. [provided by RefSeq, Jul 2008],
matters needing attention	Avoid repeated freezing and thawing!

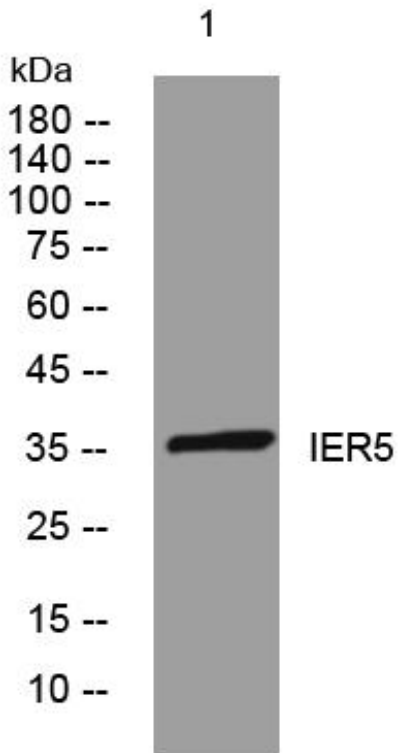
Nanjing BYabscience technology Co.,Ltd



Usage suggestions

This product can be used in immunological reaction related experiments. For more information, please consult technical personnel.

Products Images



Western Blot analysis of various cells using IER5 mouse mAb

Nanjing BYabs science technology Co.,Ltd

网址: www.njbybio.com

官方热线: 025-5229-8998

监督电话: 15950492658