



Secretin Monoclonal Antibody

Catalog No	BYmab-10929
Isotype	IgG
Reactivity	Human;Rat;Mouse;
Applications	WB
Gene Name	SCT
Protein Name	Secretin
Immunogen	Synthesized peptide derived from human Secretin
Specificity	This antibody detects endogenous levels of human Secretin
Formulation	Liquid in PBS containing 50% glycerol, 0.5% BSA and 0.02% sodium azide.
Source	Monoclonal, Mouse,IgG
Purification	The antibody was affinity-purified from mouse antiserum by affinity-chromatography using epitope-specific immunogen.
Dilution	WB 1:500-2000
Concentration	1 mg/ml
Purity	≥90%
Storage Stability	-20°C/1 year
Synonyms	Secretin
Observed Band	13kD
Cell Pathway	Secreted .
Tissue Specificity	
Function	function:Stimulates formation of NaHCO(3)-rich pancreatic juice and secretion of NaHCO(3)-rich bile and inhibits HCl production by the stomach.,online information:Secretin entry,similarity:Belongs to the glucagon family.,
Background	This gene encodes a member of the glucagon family of peptides. The encoded preproprotein is secreted by endocrine S cells in the proximal small intestinal mucosa as a prohormone, then proteolytically processed to generate the mature peptide hormone. The release of this active peptide hormone is stimulated by either fatty acids or acidic pH in the duodenum. This hormone stimulates the secretion of bile and bicarbonate in the duodenum, pancreatic and biliary ducts. [provided by RefSeq, Feb 2016],

Nanjing BYabscience technology Co.,Ltd

网址: www.njbybio.com

官方热线: 025-5229-8998

监督电话: 15950492658



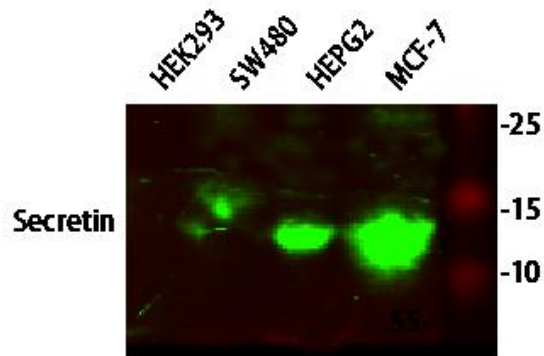
matters needing attention

Avoid repeated freezing and thawing!

Usage suggestions

This product can be used in immunological reaction related experiments. For more information, please consult technical personnel.

Products Images



Western Blot analysis of various cells using Secretin Monoclonal Antibody