



S100A7 Polyclona Antibody

Catalog No	BYmab-10918
Isotype	IgG
Reactivity	Human;Rat;Mouse;
Applications	WB
Gene Name	S100A7 PSOR1 S100A7C
Protein Name	S100A7
Immunogen	Synthesized peptide derived from human S100A7 AA range: 1-51
Specificity	This antibody detects endogenous levels of human S100A7
Formulation	Liquid in PBS containing 50% glycerol, 0.5% BSA and 0.02% sodium azide.
Source	Monoclonal, Mouse,IgG
Purification	The antibody was affinity-purified from mouse antiserum by affinity-chromatography using epitope-specific immunogen.
Dilution	WB 1:500-2000
Concentration	1 mg/ml
Purity	≥90%
Storage Stability	-20°C/1 year
Synonyms	Protein S100-A7 (Psoriasin;S100 calcium-binding protein A7)
Observed Band	
Cell Pathway	Cytoplasm . Secreted . Secreted by a non-classical secretory pathway.
Tissue Specificity	Fetal ear, skin, and tongue and human cell lines. Highly up-regulated in psoriatic epidermis. Also highly expressed in the urine of bladder squamous cell carcinoma (SCC) bearing patients.
Function	mass spectrometry: PubMed:8526920,similarity:Belongs to the S-101 family.,similarity:Contains 2 EF-hand domains.,subcellular location:Secreted by a non-classical secretory pathway.,subunit:Interacts with RANBP9.,tissue specificity:Fetal ear, skin, and tongue and human cell lines. Highly up-regulated in psoriatic epidermis. Also highly expressed in the urine of bladder squamous cell carcinoma (SCC) bearing patients.,
Background	S100 calcium binding protein A7(S100A7) Homo sapiens The protein encoded by this gene is a member of the S100 family of proteins containing 2 EF-hand calcium-binding motifs. S100 proteins are localized in the cytoplasm and/or nucleus of a wide range of cells, and involved in the regulation of a number

Nanjing BYabscience technology Co.,Ltd



of cellular processes such as cell cycle progression and differentiation. S100 genes include at least 13 members which are located as a cluster on chromosome 1q21. This protein differs from the other S100 proteins of known structure in its lack of calcium binding ability in one EF-hand at the N-terminus. The protein is overexpressed in hyperproliferative skin diseases, exhibits antimicrobial activities against bacteria and induces immunomodulatory activities. [provided by RefSeq, Nov 2014],

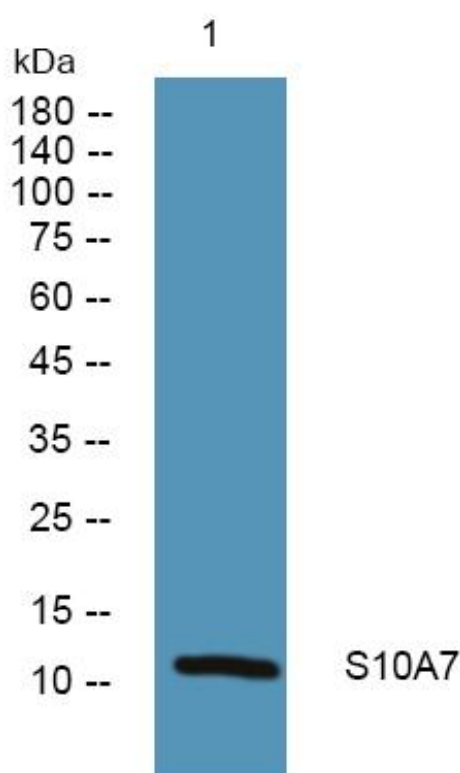
matters needing attention

Avoid repeated freezing and thawing!

Usage suggestions

This product can be used in immunological reaction related experiments. For more information, please consult technical personnel.

Products Images



Western Blot analysis of various cells using S100A7 Polyclonal Antibody