



LSM2 Polyclona Antibody

Catalog No	BYmab-10904
Isotype	IgG
Reactivity	Human; Mouse; Rat
Applications	WB
Gene Name	LSM2 C6orf28 G7B
Protein Name	LSM2
Immunogen	Synthesized peptide derived from human LSM2 AA range: 33-83
Specificity	This antibody detects endogenous levels of human LSM2
Formulation	Liquid in PBS containing 50% glycerol, 0.5% BSA and 0.02% sodium azide.
Source	Monoclonal, Mouse,IgG
Purification	The antibody was affinity-purified from mouse antiserum by affinity-chromatography using epitope-specific immunogen.
Dilution	WB 1:500-2000
Concentration	1 mg/ml
Purity	≥90%
Storage Stability	-20°C/1 year
Synonyms	U6 snRNA-associated Sm-like protein LSm2 (Protein G7b;Small nuclear ribonuclear protein D homolog;snRNP core Sm-like protein Sm-x5)
Observed Band	
Cell Pathway	Nucleus .
Tissue Specificity	Hypothalamus,Placenta,
Function	function: Binds specifically to the 3'-terminal U-tract of U6 snRNA. May be involved in pre-mRNA splicing..PTM: Phosphorylated upon DNA damage, probably by ATM or ATR..similarity: Belongs to the snRNP Sm proteins family..subunit: Identified in the spliceosome C complex, at least composed of AQR, ASCC3L1, C19orf29, CDC40, CDC5L, CRNKL1, DDX23, DDX41, DDX48, DDX5, DGCR14, DHX35, DHX38, DHX8, EFTUD2, FRG1, GPATC1, HNRPA1, HNRPA2B1, HNRPA3, HNRPC, HNRPF, HNRPH1, HNRPK, HNRPM, HNRPR, HNRPU, KIAA1160, KIAA1604, LSM2, LSM3, MAGOH, MORG1, MABPC1, PLRG1, PNN, PPIE, PPIL1, PPIL3, PPWD1, PRPF19, PRPF4B, PRPF6, PRPF8, RALY, RBM22, RBM8A, RBMX, SART1, SF3A1, SF3A2, SF3A3, SF3B1, SF3B2, SF3B3, SFRS1, SKIV2L2, SNRPA1, SNRPB, SNRPB2, SNRPD1, SNRPD2, SNRPD3,

Nanjing BYabscience technology Co.,Ltd



SNRPE, SNRPF, SNRPG, SNW1, SRRM1, SRRM2, SYF2, SYNCRIP, TFIP11, THOC4, U2AF1, WDR57, XAB2 and ZCCHC8. LSm subunits form a heteromer with a donut shape.,

Background

This gene encodes a member of the LSm family of RNA-binding proteins. LSm proteins form stable heteromers that bind specifically to the 3'-terminal oligo(U) tract of U6 snRNA and may play a role in pre-mRNA splicing by mediating U4/U6 snRNP formation. Pseudogenes of this gene are located on the short arm of chromosomes 6 and 19. [provided by RefSeq, Nov 2011],

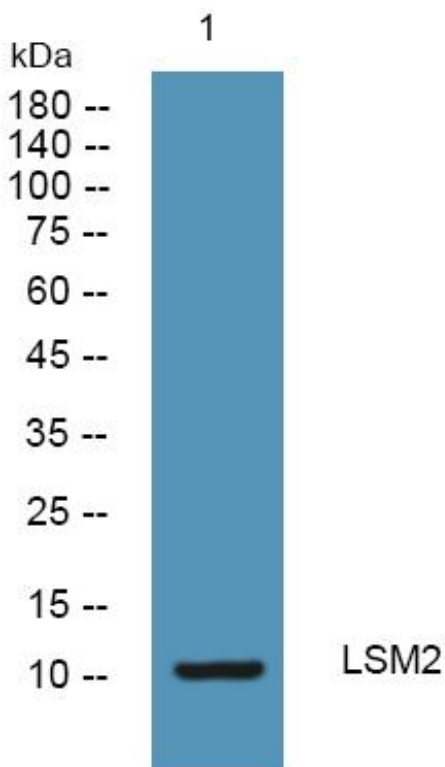
matters needing attention

Avoid repeated freezing and thawing!

Usage suggestions

This product can be used in immunological reaction related experiments. For more information, please consult technical personnel.

Products Images



Western Blot analysis of various cells using LSM2 Polyclonal Antibody