



POLD4 Polyclona Antibody

| | |
|--------------------|--|
| Catalog No | BYmab-10889 |
| Isotype | IgG |
| Reactivity | Human;Rat;Mouse; |
| Applications | WB |
| Gene Name | POLD4 POLDS |
| Protein Name | POLD4 |
| Immunogen | Synthesized peptide derived from human POLD4 AA range: 43-93 |
| Specificity | This antibody detects endogenous levels of human POLD4 |
| Formulation | Liquid in PBS containing 50% glycerol, 0.5% BSA and 0.02% sodium azide. |
| Source | Monoclonal, Mouse,IgG |
| Purification | The antibody was affinity-purified from mouse antiserum by affinity-chromatography using epitope-specific immunogen. |
| Dilution | WB 1:500-2000 |
| Concentration | 1 mg/ml |
| Purity | ≥90% |
| Storage Stability | -20°C/1 year |
| Synonyms | DNA polymerase delta subunit 4 (DNA polymerase delta subunit p12) |
| Observed Band | |
| Cell Pathway | Nucleus . Partially recruited to DNA damage sites within 2 hours following UV irradiation, before degradation. . |
| Tissue Specificity | Brain,Cervix,Ovarian carcinoma,Pooled, |
| Function | function:Required for optimal DNA polymerase delta activity. May contribute to PCNA-dependent activity of DNA polymerase delta.,similarity:Belongs to the DNA polymerase delta subunit 4 family.,subunit:Heterotetramer composed of subunits of 125 kDa, 50 kDa, 66 kDa and 12 kDa. Interacts with WRNIP1. Interacts with POLD4, POLD2, POLD1 and PCNA., |
| Background | This gene encodes the smallest subunit of DNA polymerase delta. DNA polymerase delta possesses both polymerase and 3' to 5' exonuclease activity and plays a critical role in DNA replication and repair. The encoded protein enhances the activity of DNA polymerase delta and plays a role in fork repair and stabilization through interactions with the DNA helicase Bloom syndrome protein. Alternatively spliced transcript variants encoding multiple |

Nanjing BYabscience technology Co.,Ltd



isoforms have been observed for this gene. [provided by RefSeq, Mar 2012],

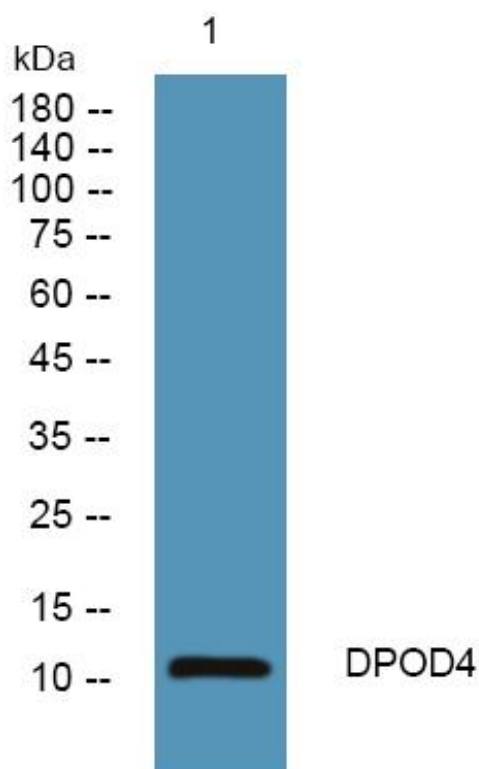
matters needing attention

Avoid repeated freezing and thawing!

Usage suggestions

This product can be used in immunological reaction related experiments. For more information, please consult technical personnel.

Products Images



Western Blot analysis of various cells using POLD4 Polyclonal Antibody