



MAP4 Monoclonal Antibody

Catalog No	BYmab-10792
Isotype	IgG
Reactivity	Human;Mouse;Rat
Applications	WB
Gene Name	MAP4
Protein Name	Microtubule-associated protein 4 (MAP-4)
Immunogen	Synthesized peptide derived from human MAP4 Monoclonal
Specificity	This antibody detects endogenous levels of MAP4.
Formulation	Liquid in PBS containing 50% glycerol, 0.5% BSA and 0.02% sodium azide.
Source	Monoclonal, Mouse,IgG
Purification	The antibody was affinity-purified from mouse antiserum by affinity-chromatography using epitope-specific immunogen.
Dilution	WB 1:500-2000
Concentration	1 mg/ml
Purity	≥90%
Storage Stability	-20°C/1 year
Synonyms	Microtubule-associated protein 4 (MAP-4)
Observed Band	85kD
Cell Pathway	Cytoplasm, cytoskeleton . Cytoplasm, cytoskeleton, microtubule organizing center . Recruitment to microtubule is inhibited by microtubules polyglutamylation. .
Tissue Specificity	Bone marrow,Brain,Cerebellum,Colon carcinoma,Epithelium,Eye,Heart,Liver,Lym
Function	alternative products:Additional isoforms seem to exist,caution:The sequence shown here is derived from an Ensembl automatic analysis pipeline and should be considered as preliminary data.,function:Non-neuronal microtubule-associated protein. Promotes microtubule assembly.,PTM:Phosphorylated upon DNA damage, probably by ATM or ATR (By similarity). Phosphorylation on Ser-787 negatively regulates MAP4 activity to promote microtubule assembly. Isoform 3 is phosphorylated on Ser-337 and Ser-338.,similarity:Contains 3 Tau/MAP repeats.,similarity:Contains 4 Tau/MAP repeats.,
Background	The protein encoded by this gene is a major non-neuronal microtubule-associated protein. This protein contains a domain similar to the microtubule-binding domains of neuronal microtubule-associated protein (MAP2)

Nanjing BYabscience technology Co.,Ltd



and microtubule-associated protein tau (MAPT/TAU). This protein promotes microtubule assembly, and has been shown to counteract destabilization of interphase microtubule catastrophe promotion. Cyclin B was found to interact with this protein, which targets cell division cycle 2 (CDC2) kinase to microtubules. The phosphorylation of this protein affects microtubule properties and cell cycle progression. Multiple transcript variants encoding different isoforms have been found for this gene. [provided by RefSeq, Aug 2008],

matters needing attention

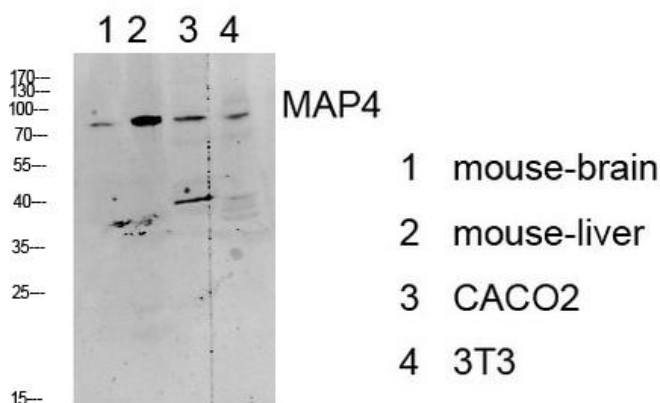
Avoid repeated freezing and thawing!

Usage suggestions

This product can be used in immunological reaction related experiments. For more information, please consult technical personnel.

Products Images

Western Blot analysis of various cells using MAP4 Monoclonal Antibody



Nanjing BYabs science technology Co.,Ltd

网址: www.njbybio.com

官方热线: 025-5229-8998

监督电话: 15950492658