



C1RL Monoclonal Antibody

Catalog No	BYmab-10784
Isotype	IgG
Reactivity	Human;Rat;Mouse;
Applications	WB
Gene Name	C1RL
Protein Name	C1RL
Immunogen	Synthesized peptide derived from human C1RL. at AA range: 371-420
Specificity	C1RL Monoclonal Antibody detects endogenous levels of C1RL
Formulation	Liquid in PBS containing 50% glycerol, 0.5% BSA and 0.02% sodium azide.
Source	Monoclonal, Mouse,IgG
Purification	The antibody was affinity-purified from mouse antiserum by affinity-chromatography using epitope-specific immunogen.
Dilution	WB 1:500-2000
Concentration	1 mg/ml
Purity	≥90%
Storage Stability	-20°C/1 year
Synonyms	Complement C1r subcomponent-like protein (C1r-LP) (C1r-like protein) (EC 3.4.21.-) (C1r-like serine protease analog protein) (CLSPa)
Observed Band	53kD
Cell Pathway	Secreted .
Tissue Specificity	Highly expressed in placenta, liver, kidney, pancreas, moderately in lung, spleen, prostate, ovary, colon, and PBL, and weakly in heart, skeletal muscle, thymus, testis, and small intestine. Expressed in PC-3 (prostate adenocarcinoma) and SK-OV-3 (ovary adenocarcinoma) cells, but not in LoVo and HT-29 (colon adenocarcinoma), SMMC7721 (hepatocellular carcinoma), CaoV-3 (ovary adenocarcinoma), HeLa (cervix epithelioid carcinoma), MCF-7 (breast adenocarcinoma), U-251MG (glioma) or A-549 (lung carcinoma) cells. Widely expressed in myeloid leukemia cell lines, including K-562 (chronic myelogenous leukemia), THP-1 (myelomonocytic leukemia), HL-60 and NB4 (promyelocytic leukemia), and KG-1 (acute myelogenous leukemia) cells. Expressed mainly in the liver and in serum (at protein level).
Function	caution:Does not associate with the C1 complex. According to PubMed:15385675 doesn't cleave the proform of complement C1s.,function:Mediates the proteolytic

Nanjing BYabscience technology Co.,Ltd



cleavage of HP/haptoglobin in the endoplasmic reticulum.,induction:Up-regulated in monocytes and dendritic cells (DC) undergoing maturation or activation.,similarity:Belongs to the peptidase S1 family.,similarity:Contains 1 CUB domain.,similarity:Contains 1 peptidase S1 domain.,tissue specificity:Highly expressed in placenta, liver, kidney, pancreas, moderately in lung, spleen, prostate, ovary, colon, and PBL, and weakly in heart, skeletal muscle, thymus, testis, and small intestine. Expressed in PC-3 (prostate adenocarcinoma) and SK-OV-3 (ovary adenocarcinoma) cells, but not in LoVo and HT-29 (colon adenocarcinoma), SMMC7721 (hepatocellular carcinoma), CaoV-3 (ovary adenocarcinoma), HeLa (cervix epithelioid carcinoma), MCF-7 (breast

Background

caution:Does not associate with the C1 complex. According to PubMed:15385675 doesn't cleave the proform of complement C1s.,function:Mediates the proteolytic cleavage of HP/haptoglobin in the endoplasmic reticulum.,induction:Up-regulated in monocytes and dendritic cells (DC) undergoing maturation or activation.,similarity:Belongs to the peptidase S1 family.,similarity:Contains 1 CUB domain.,similarity:Contains 1 peptidase S1 domain.,tissue specificity:Highly expressed in placenta, liver, kidney, pancreas, moderately in lung, spleen, prostate, ovary, colon, and PBL, and weakly in heart, skeletal muscle, thymus, testis, and small intestine. Expressed in PC-3 (prostate adenocarcinoma) and SK-OV-3 (ovary adenocarcinoma) cells, but not in LoVo and HT-29 (colon adenocarcinoma), SMMC7721 (hepatocellular carcinoma), CaoV-3 (ovary adenocarcinoma), HeLa (cervix epithelioid carcinoma), MCF-7 (breast adenocarcinoma), U251 (glioma) or A549 (lung carcinoma) cells. Widely expressed in myeloid leukemia cell lines, including K-562 (chronic myelogenous leukemia), THP-1 (myelomonocytic leukemia), HL-60 and NB4 (promyelocytic leukemia), and KG-1 (acute myelogenous leukemia) cells. Expressed mainly in the liver and in serum (at protein level).,

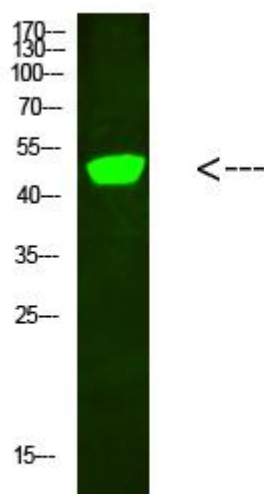
matters needing attention

Avoid repeated freezing and thawing!

Usage suggestions

This product can be used in immunological reaction related experiments. For more information, please consult technical personnel.

Products Images



Western Blot analysis of various cells using C1RL Monoclonal Antibody

Nanjing BYabscience technology Co.,Ltd

网址: www.njbybio.com

官方热线: 025-5229-8998

监督电话: 15950492658