



CD64 Monoclonal Antibody

Catalog No	BYmab-10645
Isotype	IgG
Reactivity	Human;Rat;Mouse;
Applications	WB
Gene Name	FCGR1A FCG1 FCGR1 IGFR1
Protein Name	High affinity immunoglobulin gamma Fc receptor I (IgG Fc receptor I) (Fc-gamma RI) (FcRI) (Fc-gamma RIA) (FcgammaRIa) (CD antigen CD64)
Immunogen	Synthetic peptide from human protein at AA range: 230-280
Specificity	The antibody detects endogenous CD64
Formulation	Liquid in PBS containing 50% glycerol, 0.5% BSA and 0.02% sodium azide.
Source	Monoclonal, Mouse,IgG
Purification	The antibody was affinity-purified from mouse antiserum by affinity-chromatography using epitope-specific immunogen.
Dilution	WB 1:500-2000
Concentration	1 mg/ml
Purity	≥90%
Storage Stability	-20°C/1 year
Synonyms	High affinity immunoglobulin gamma Fc receptor I (IgG Fc receptor I;Fc-gamma RI;FcRI;Fc-gamma RIA;FcgammaRIa;CD antigen CD64)
Observed Band	45kD
Cell Pathway	Cell membrane ; Single-pass type I membrane protein . Stabilized at the cell membrane through interaction with FCER1G.
Tissue Specificity	Monocyte/macrophage specific.
Function	function:High affinity receptor for the Fc region of immunoglobulins gamma. Functions in both innate and adaptive immune responses.,online information:FCGR1A mutation db,PTM:N-glycosylated.,PTM:Phosphorylated on serine residues.,similarity:Belongs to the immunoglobulin superfamily. FCGR1 family.,similarity:Contains 3 Ig-like C2-type (immunoglobulin-like) domains.,subcellular location:Stabilized at the cell membrane through interaction with FCER1G.,subunit:Interacts with FCER1G; forms a functional signaling complex. Interacts with FLNA; prevents FCGR1A degradation. Interacts with EPB41L2, LAT and PPL.,tissue specificity:Monocyte/macrophage specific.,

Nanjing BYabscience technology Co.,Ltd

网址: www.njbybio.com

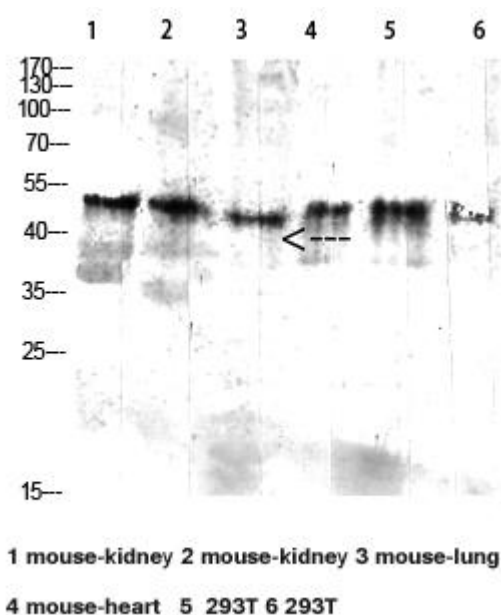
官方热线: 025-5229-8998

监督电话: 15950492658



Background	This gene encodes a protein that plays an important role in the immune response. This protein is a high-affinity Fc-gamma receptor. The gene is one of three related gene family members located on chromosome 1. [provided by RefSeq, Jul 2008],
matters needing attention	Avoid repeated freezing and thawing!
Usage suggestions	This product can be used in immunological reaction related experiments. For more information, please consult technical personnel.

Products Images



Western Blot analysis of various cells using CD64 Monoclonal Antibody