



# Tubulin $\alpha$ Monoclonal Antibody

Catalog No	BYmab-10638
Isotype	IgG
Reactivity	Human;Mouse;Rat
Applications	WB
Gene Name	Tubulin alpha
Protein Name	Tubulin alpha
Immunogen	Synthetic peptide from human protein at AA range: 380-420
Specificity	The antibody detects endogenous Tubulin $\alpha$
Formulation	Liquid in PBS containing 50% glycerol, 0.5% BSA and 0.02% sodium azide.
Source	Monoclonal, Mouse,IgG
Purification	The antibody was affinity-purified from mouse antiserum by affinity-chromatography using epitope-specific immunogen.
Dilution	WB 1:500-2000
Concentration	1 mg/ml
Purity	$\geq 90\%$
Storage Stability	-20°C/1 year
Synonyms	Alpha-tubulin 1 antibody ALS22 antibody B ALPHA 1 antibody bA408E5.3 antibody H2 ALPHA antibody Hum a tub1 antibody Hum a tub2 antibody LIS3 antibody MGC171407 antibody MGC55332 antibody TBA4A_HUMAN antibody Testis-specific alpha-tubulin antibody

Nanjing BYabscience technology Co.,Ltd



	<p>TUBA1 antibody</p> <p>TUBA1A antibody</p> <p>tuba1l antibody</p> <p>Tuba4a antibody</p> <p>Tubulin alpha 1 chain antibody</p> <p>Tubulin alpha antibody</p> <p>Tubulin alpha-1 chain antibody</p> <p>tubulin alpha-1B chain antibody</p> <p>Tubulin alpha-4A chain antibody</p> <p>Tubulin H2-alpha antibody</p> <p>Tubulin, alpha 1 (testis specific) antibody</p> <p>tubulin, alpha 1, like antibody</p> <p>Tubulin, alpha 4a antibody</p> <p>Tubulin, alpha, testis-specific antibody</p> <p>Tubulin, alpha-1 antibody</p>
<b>Observed Band</b>	15kD
<b>Cell Pathway</b>	Cytoplasm, cytoskeleton.
<b>Tissue Specificity</b>	Expressed at a high level in fetal brain.
<b>Function</b>	<p>disease:Defects in TUBA1A are the cause of lissencephaly type 3 (LIS3) [MIM:611603]. LIS is characterized by a smooth brain surface due to the absence (agyria) or reduction (pachygyria) of surface convolutions. It is often associated with psychomotor retardation and seizures. LIS3 features include agyria or pachygyria or laminar heterotopia, severe mental retardation, motor delay, variable presence of seizures, and abnormalities of corpus callosum, hippocampus, cerebellar vermis and brainstem.,function:Tubulin is the major constituent of microtubules. It binds two moles of GTP, one at an exchangeable site on the beta chain and one at a non-exchangeable site on the alpha-chain.,PTM:Undergoes a tyrosination/detyrosination cycle, the cyclic removal and re-addition of a C-terminal tyrosine residue by the enzymes tubulin tyrosine carboxypeptidase (TTCP) and tubulin tyrosine ligase (TTL), resp</p>
<b>Background</b>	<p>Microtubules of the eukaryotic cytoskeleton perform essential and diverse functions and are composed of a heterodimer of alpha and beta tubulins. The genes encoding these microtubule constituents belong to the tubulin superfamily, which is composed of six distinct families. Genes from the alpha, beta and gamma tubulin families are found in all eukaryotes. The alpha and beta tubulins represent the major components of microtubules, while gamma tubulin plays a critical role in the nucleation of microtubule assembly. There are multiple alpha and beta tubulin genes, which are highly conserved among species. This gene encodes alpha tubulin and is highly similar to the mouse and rat Tuba1 genes. Northern blotting studies have shown that the gene expression is predominantly found in morphologically differentiated neurologic cells. This gene is one of three alpha-tubulin genes in a cluster on chromosome 12q.</p>
<b>matters needing attention</b>	Avoid repeated freezing and thawing!
<b>Usage suggestions</b>	This product can be used in immunological reaction related experiments. For more information, please consult technical personnel.

**Nanjing BYabscience technology Co.,Ltd**

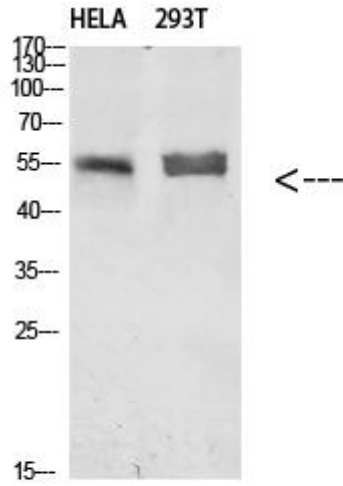
网址: [www.njbybio.com](http://www.njbybio.com)

官方热线: 025-5229-8998

监督电话: 15950492658



## Products Images



Western Blot analysis of various cells using Tubulin  $\alpha$  Monoclonal Antibody

Nanjing BYabs science technology Co.,Ltd

网址: [www.njbybio.com](http://www.njbybio.com)

官方热线: 025-5229-8998

监督电话: 15950492658