



# IL-31 Monoclonal Antibody

<b>Catalog No</b>	BYmab-10637
<b>Isotype</b>	IgG
<b>Reactivity</b>	Human;Rat;Mouse;
<b>Applications</b>	WB
<b>Gene Name</b>	IL31
<b>Protein Name</b>	Interleukin-31 (IL-31)
<b>Immunogen</b>	The antiserum was produced against synthesized peptide derived from the Internal region of human IL31. AA range:21-70
<b>Specificity</b>	The antibody detects endogenous IL-31
<b>Formulation</b>	Liquid in PBS containing 50% glycerol, 0.5% BSA and 0.02% sodium azide.
<b>Source</b>	Monoclonal, Mouse,IgG
<b>Purification</b>	The antibody was affinity-purified from mouse antiserum by affinity-chromatography using epitope-specific immunogen.
<b>Dilution</b>	WB 1:500-2000
<b>Concentration</b>	1 mg/ml
<b>Purity</b>	≥90%
<b>Storage Stability</b>	-20°C/1 year
<b>Synonyms</b>	Interleukin-31 (IL-31)
<b>Observed Band</b>	65kD
<b>Cell Pathway</b>	Secreted .
<b>Tissue Specificity</b>	Detected at low levels in testis, bone marrow, skeletal muscle, kidney, colon, thymus, small intestine and trachea.
<b>Function</b>	function:Activates STAT3 and possibly STAT1 and STAT5 through the IL31 heterodimeric receptor composed of IL31RA and OSMR. IL31 may function in skin immunity.;induction:Up-regulated in skin homing T-cells of patients with atopic dermatitis (AD) and in activated circulating T-cells. Up-regulated in lesional biopsies of patients with allergic contact dermatitis (ACD).;tissue specificity:Detected at low levels in testis, bone marrow, skeletal muscle, kidney, colon, thymus, small intestine and trachea.,
<b>Background</b>	IL31, which is made principally by activated Th2-type T cells, interacts with a heterodimeric receptor consisting of IL31RA (MIM 609510) and OSMR (MIM 601743) that is constitutively expressed on epithelial cells and keratinocytes. IL31

**Nanjing BYabscience technology Co.,Ltd**



may be involved in the promotion of allergic skin disorders and in regulating other allergic diseases, such as asthma (Dillon et al., 2004 [PubMed 15184896]).[supplied by OMIM, Mar 2008],

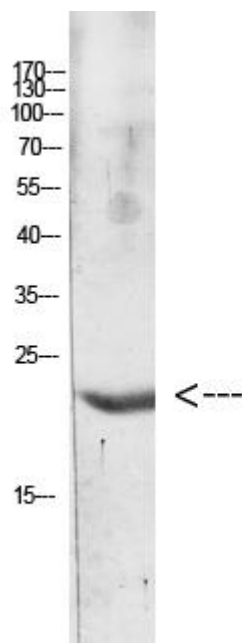
**matters needing attention**

Avoid repeated freezing and thawing!

**Usage suggestions**

This product can be used in immunological reaction related experiments. For more information, please consult technical personnel.

## Products Images



Western Blot analysis of various cells using IL-31 Monoclonal Antibody