



Imp3 Monoclonal Antibody

Catalog No	BYmab-10618
Isotype	IgG
Reactivity	Human;Mouse;Rat
Applications	WB
Gene Name	IMP3 C15orf12 MRPS4
Protein Name	IMP3, U3 small nucleolar ribonucleoprotein, homolog (yeast)
Immunogen	Synthetic peptide from human protein at AA range: 135-184
Specificity	The antibody detects endogenous Imp3 protein
Formulation	Liquid in PBS containing 50% glycerol, 0.5% BSA and 0.02% sodium azide.
Source	Monoclonal, Mouse,IgG
Purification	The antibody was affinity-purified from mouse antiserum by affinity-chromatography using epitope-specific immunogen.
Dilution	WB 1:500-2000
Concentration	1 mg/ml
Purity	≥90%
Storage Stability	-20°C/1 year
Synonyms	IMP3 C15orf12 MRPS4
Observed Band	25kD
Cell Pathway	Nucleus, nucleolus .
Tissue Specificity	Eye,Placenta,Uterus,
Function	function:Component of the 60-80S U3 small nucleolar ribonucleoprotein (U3 snoRNP). Required for the early cleavages during pre-18S ribosomal RNA processing.,similarity:Belongs to the ribosomal protein S4P family.,similarity:Contains 1 S4 RNA-binding domain.,subunit:Component of a heterotrimeric complex containing IMP3, IMP4 and MPHOSPH10. Interacts with MPHOSPH10.,
Background	This gene encodes the human homolog of the yeast Imp3 protein. The protein localizes to the nucleoli and interacts with the U3 snoRNP complex. The protein contains an S4 domain. [provided by RefSeq, Jul 2008],

Nanjing BYabscience technology Co.,Ltd

网址: www.njbybio.com

官方热线: 025-5229-8998

监督电话: 15950492658



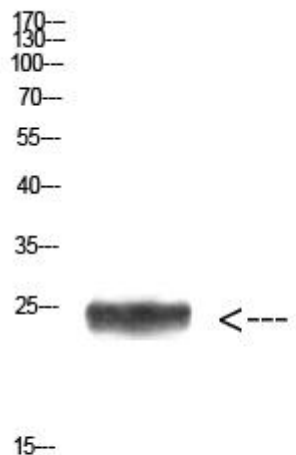
matters needing attention

Avoid repeated freezing and thawing!

Usage suggestions

This product can be used in immunological reaction related experiments. For more information, please consult technical personnel.

Products Images



Western Blot analysis of various cells using Imp3 Monoclonal Antibody