



# ERLIN1/2 Monoclonal Antibody

<b>Catalog No</b>	BYmab-10605
<b>Isotype</b>	IgG
<b>Reactivity</b>	Human;Mouse;Rat
<b>Applications</b>	WB
<b>Gene Name</b>	ERLIN1/ERLIN2
<b>Protein Name</b>	ERLIN1/2
<b>Immunogen</b>	Synthesized peptide derived from ERLIN1/2 at AA range: 31-80
<b>Specificity</b>	ERLIN1/2 Monoclonal Antibody detects endogenous levels of ERLIN1/2
<b>Formulation</b>	Liquid in PBS containing 50% glycerol, 0.5% BSA and 0.02% sodium azide.
<b>Source</b>	Monoclonal, Mouse,IgG
<b>Purification</b>	The antibody was affinity-purified from mouse antiserum by affinity-chromatography using epitope-specific immunogen.
<b>Dilution</b>	WB 1:500-2000
<b>Concentration</b>	1 mg/ml
<b>Purity</b>	≥90%
<b>Storage Stability</b>	-20°C/1 year
<b>Synonyms</b>	
<b>Observed Band</b>	40 42kD
<b>Cell Pathway</b>	Endoplasmic reticulum membrane ; Single-pass type II membrane protein . Associated with lipid raft-like domains of the endoplasmic reticulum membrane.
<b>Tissue Specificity</b>	Expressed in heart, placenta, liver, kidney, pancreas, prostate, testis, ovary and small intestine.
<b>Function</b>	similarity:Belongs to the band 7/mec-2 family.,subcellular location:Associated with lipid raft-like domains of the endoplasmic reticulum membrane.,tissue specificity:Expressed in heart, placenta, liver, kidney, pancreas, prostate, testis, ovary and small intestine.,
<b>Background</b>	similarity:Belongs to the band 7/mec-2 family.,subcellular location:Associated with lipid raft-like domains of the endoplasmic reticulum membrane.,tissue specificity:Expressed in heart, placenta, liver, kidney, pancreas, prostate, testis, ovary and small intestine.,

**Nanjing BYabscience technology Co.,Ltd**

网址: [www.njbybio.com](http://www.njbybio.com)

官方热线: 025-5229-8998

监督电话: 15950492658



**matters needing attention**

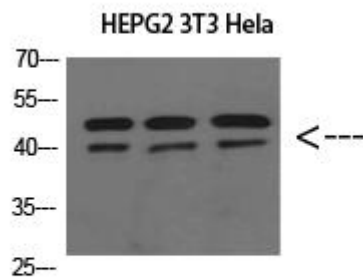
Avoid repeated freezing and thawing!

**Usage suggestions**

This product can be used in immunological reaction related experiments. For more information, please consult technical personnel.

## Products Images

Western Blot analysis of various cells using ERLIN1/2 Monoclonal Antibody



Nanjing BYabs science technology Co.,Ltd

网址: [www.njbybio.com](http://www.njbybio.com)

官方热线: 025-5229-8998

监督电话: 15950492658