



# IgM Chain C Monoclonal Antibody

Catalog No	BYmab-10595
Isotype	IgG
Reactivity	Human;Mouse;Rat
Applications	WB
Gene Name	IGHM
Protein Name	IgM Chain C
Immunogen	Synthesized peptide derived from IgM Chain C at AA range: 391-440
Specificity	IgM Chain C Monoclonal Antibody detects endogenous levels of IgM Chain C
Formulation	Liquid in PBS containing 50% glycerol, 0.5% BSA and 0.02% sodium azide.
Source	Monoclonal, Mouse,IgG
Purification	The antibody was affinity-purified from mouse antiserum by affinity-chromatography using epitope-specific immunogen.
Dilution	WB 1:500-2000
Concentration	1 mg/ml
Purity	≥90%
Storage Stability	-20°C/1 year
Synonyms	Ig mu chain C region
Observed Band	50kD
Cell Pathway	[Isoform 1]: Secreted. During differentiation, B-lymphocytes switch from expression of membrane-bound IgM to secretion of IgM.; [Isoform 2]: Cell membrane; Single-pass type I membrane protein.
Tissue Specificity	Dermoid tumor,Esophagus tumor,Glandular pool- thyroid,Liver,Neuroblastoma,P
Function	disease:Chromosomal aberrations involving IGHG1 may be a cause of multiple myeloma [MIM:254500]. Translocation t(11;14)(q13;q32) with CCND1; translocation t(4;14)(p16.3;q32.3) with FGFR3; translocation t(6;14)(p25;q32) with IRF4.;miscellaneous:Disease protein OMM may represent an allelic form or another gamma chain subclass.;miscellaneous:Disease protein WIS is lacking most of the V region and all of the CH1 region.;miscellaneous:Disease protein ZUC lack most of the V region, all of the CH1 region, and part of the hinge compared with normal gamma-3 heavy chains.;miscellaneous:EU also differs in the amidation states of residues 155, 166, 177, 195, 198, 269, and 272 and in the order of residues 268-272.;miscellaneous:KOL also differs in the amidation states of residues 198, 267 and 272.;miscellaneous:Nie also differs in the amidation

Nanjing BYabscience technology Co.,Ltd



states of 35, 116, 198, 269 and 272.,miscellaneous:Nie h

## Background

Immunoglobulins (Ig) are the antigen recognition molecules of B cells. An Ig molecule is made up of 2 identical heavy chains and 2 identical light chains (see MIM 147200) joined by disulfide bonds so that each heavy chain is linked to a light chain and the 2 heavy chains are linked together. Each Ig heavy chain has an N-terminal variable (V) region containing the antigen-binding site and a C-terminal constant (C) region, encoded by an individual C region gene, that determines the isotype of the antibody and provides effector or signaling functions. The heavy chain V region is encoded by 1 each of 3 types of genes: V genes (see MIM 147070), joining (J) genes (see MIM 147010), and diversity (D) genes (see MIM 146910). The C region genes are clustered downstream of the V region genes within the heavy chain locus on chromosome 14. TheIGHM gene encodes the C region of the mu heavy chain, which d

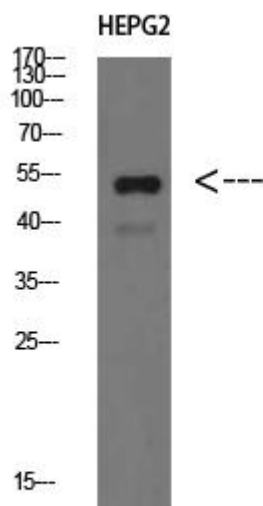
## matters needing attention

Avoid repeated freezing and thawing!

## Usage suggestions

This product can be used in immunological reaction related experiments. For more information, please consult technical personnel.

## Products Images



Western Blot analysis of various cells using IgM Chain C Monoclonal Antibody

**Nanjing BYabscience technology Co.,Ltd**

网址: [www.njbybio.com](http://www.njbybio.com)

官方热线: 025-5229-8998

监督电话: 15950492658